

# [MS-WPRN]: Web Point-and-Print Protocol

---

## Intellectual Property Rights Notice for Open Specifications Documentation

- **Technical Documentation.** Microsoft publishes Open Specifications documentation for protocols, file formats, languages, standards as well as overviews of the interaction among each of these technologies.
- **Copyrights.** This documentation is covered by Microsoft copyrights. Regardless of any other terms that are contained in the terms of use for the Microsoft website that hosts this documentation, you may make copies of it in order to develop implementations of the technologies described in the Open Specifications and may distribute portions of it in your implementations using these technologies or your documentation as necessary to properly document the implementation. You may also distribute in your implementation, with or without modification, any schema, IDL's, or code samples that are included in the documentation. This permission also applies to any documents that are referenced in the Open Specifications.
- **No Trade Secrets.** Microsoft does not claim any trade secret rights in this documentation.
- **Patents.** Microsoft has patents that may cover your implementations of the technologies described in the Open Specifications. Neither this notice nor Microsoft's delivery of the documentation grants any licenses under those or any other Microsoft patents. However, a given Open Specification may be covered by Microsoft [Open Specification Promise](#) or the [Community Promise](#). If you would prefer a written license, or if the technologies described in the Open Specifications are not covered by the Open Specifications Promise or Community Promise, as applicable, patent licenses are available by contacting [iplg@microsoft.com](mailto:iplg@microsoft.com).
- **Trademarks.** The names of companies and products contained in this documentation may be covered by trademarks or similar intellectual property rights. This notice does not grant any licenses under those rights. For a list of Microsoft trademarks, visit [www.microsoft.com/trademarks](http://www.microsoft.com/trademarks).
- **Fictitious Names.** The example companies, organizations, products, domain names, email addresses, logos, people, places, and events depicted in this documentation are fictitious. No association with any real company, organization, product, domain name, email address, logo, person, place, or event is intended or should be inferred.

**Reservation of Rights.** All other rights are reserved, and this notice does not grant any rights other than specifically described above, whether by implication, estoppel, or otherwise.

**Tools.** The Open Specifications do not require the use of Microsoft programming tools or programming environments in order for you to develop an implementation. If you have access to Microsoft programming tools and environments you are free to take advantage of them. Certain Open Specifications are intended for use in conjunction with publicly available standard specifications and network programming art, and assumes that the reader either is familiar with the aforementioned material or has immediate access to it.

## Revision Summary

Date	Revision History	Revision Class	Comments
03/02/2007	1.0		Version 1.0 release
04/03/2007	1.1		Version 1.1 release
05/11/2007	1.2		Version 1.2 release
06/01/2007	1.2.1	Editorial	Revised and edited the technical content.
07/03/2007	1.2.2	Editorial	Revised and edited the technical content.
08/10/2007	1.2.3	Editorial	Revised and edited the technical content.
09/28/2007	1.2.4	Editorial	Revised and edited the technical content.
10/23/2007	2.0	Major	Converted document to unified format.
01/25/2008	2.0.1	Editorial	Revised and edited the technical content.
03/14/2008	2.1	Minor	Updated the technical content.
06/20/2008	2.2	Minor	Updated the technical content.
07/25/2008	3.0	Major	Updated and revised the technical content.
08/29/2008	3.1	Minor	Updated the technical content.
10/24/2008	3.1.1	Editorial	Revised and edited the technical content.
12/05/2008	3.2	Minor	Updated the technical content.
01/16/2009	3.3	Minor	Updated the technical content.
02/27/2009	3.3.1	Editorial	Revised and edited the technical content.
04/10/2009	3.3.2	Editorial	Revised and edited the technical content.
05/22/2009	3.4	Minor	Updated the technical content.
07/02/2009	3.4.1	Editorial	Revised and edited the technical content.
08/14/2009	3.5	Minor	Updated the technical content.
09/25/2009	3.6	Minor	Updated the technical content.
11/06/2009	3.7	Minor	Updated the technical content.
12/18/2009	3.8	Minor	Updated the technical content.
01/29/2010	3.8.1	Editorial	Revised and edited the technical content.
03/12/2010	3.8.2	Editorial	Revised and edited the technical content.

<b>Date</b>	<b>Revision History</b>	<b>Revision Class</b>	<b>Comments</b>
04/23/2010	3.8.3	Editorial	Revised and edited the technical content.
06/04/2010	3.8.4	Editorial	Revised and edited the technical content.
07/16/2010	3.9	Minor	Clarified the meaning of the technical content.
08/27/2010	3.9	No change	No changes to the meaning, language, or formatting of the technical content.
10/08/2010	3.9	No change	No changes to the meaning, language, or formatting of the technical content.
11/19/2010	3.10	Minor	Clarified the meaning of the technical content.
01/07/2011	3.10	No change	No changes to the meaning, language, or formatting of the technical content.
02/11/2011	3.10	No change	No changes to the meaning, language, or formatting of the technical content.
03/25/2011	3.10	No change	No changes to the meaning, language, or formatting of the technical content.
05/06/2011	3.10	No change	No changes to the meaning, language, or formatting of the technical content.
06/17/2011	3.11	Minor	Clarified the meaning of the technical content.
09/23/2011	3.11	No change	No changes to the meaning, language, or formatting of the technical content.
12/16/2011	4.0	Major	Significantly changed the technical content.
03/30/2012	4.0	No change	No changes to the meaning, language, or formatting of the technical content.
07/12/2012	4.0	No change	No changes to the meaning, language, or formatting of the technical content.
10/25/2012	4.0	No change	No changes to the meaning, language, or formatting of the technical content.
01/31/2013	4.0	No change	No changes to the meaning, language, or formatting of the technical content.
08/08/2013	5.0	Major	Significantly changed the technical content.
11/14/2013	5.0	No change	No changes to the meaning, language, or formatting of the technical content.
02/13/2014	5.0	No change	No changes to the meaning, language, or formatting of the technical content.

# Contents

<b>1 Introduction</b>	<b>6</b>
1.1 Glossary	6
1.2 References	7
1.2.1 Normative References	7
1.2.2 Informative References	7
1.3 Overview	8
1.4 Relationship to Other Protocols	8
1.5 Prerequisites/Preconditions	8
1.6 Applicability Statement	9
1.7 Versioning and Capability Negotiation	9
1.8 Vendor-Extensible Fields	9
1.9 Standards Assignments	9
<b>2 Messages</b>	<b>10</b>
2.1 Transport	10
2.2 Message Syntax	10
2.2.1 Common Data Types	10
2.2.2 ClientInfo Value	10
2.2.3 Registry Type Values	11
2.2.4 Driver Selection Request	12
2.2.5 Driver Selection Response	12
2.2.6 Driver Download Request	13
2.2.7 Driver Download Response	13
2.2.7.1 BIN File Format	13
2.2.7.1.1 UserDevMode Structure	14
2.2.7.1.2 PrnDataRoot Structure	15
2.2.7.2 DAT File Format	16
<b>3 Protocol Details</b>	<b>18</b>
3.1 Client Details	18
3.1.1 Abstract Data Model	18
3.1.2 Timers	18
3.1.3 Initialization	18
3.1.4 Higher-Layer Triggered Events	18
3.1.5 Message Processing Events and Sequencing Rules	18
3.1.6 Timer Events	18
3.1.7 Other Local Events	18
3.2 Server Details	19
3.2.1 Abstract Data Model	19
3.2.2 Timers	19
3.2.3 Initialization	19
3.2.4 Higher-Layer Triggered Events	19
3.2.5 Message Processing Events and Sequencing Rules	20
3.2.6 Timer Events	20
3.2.7 Other Local Events	20
<b>4 Protocol Examples</b>	<b>21</b>
4.1 Client/Server Interaction	21
4.2 Client/Server Messages	21
4.2.1 Client	21

4.2.2 Server .....	21
<b>5 Security.....</b>	<b>23</b>
5.1 Security Considerations for Implementers.....	23
5.2 Index of Security Parameters .....	23
<b>6 Appendix A: Product Behavior.....</b>	<b>24</b>
<b>7 Change Tracking.....</b>	<b>26</b>
<b>8 Index .....</b>	<b>27</b>

# 1 Introduction

This is a specification of the Web Point-and-Print Protocol. It is based on the **Hypertext Transfer Protocol (HTTP)** [\[RFC2616\]](#).

The Web Point-and-Print Protocol provides a way for a client to download **printer driver** software, from a server in the client network, from a website, or directly by a print device. This supports the distribution of printer drivers using standard web technologies.

This protocol references commonly used data types as defined in [\[MS-DTYP\]](#).

Sections 1.8, 2, and 3 of this specification are normative and can contain the terms MAY, SHOULD, MUST, MUST NOT, and SHOULD NOT as defined in RFC 2119. Sections 1.5 and 1.9 are also normative but cannot contain those terms. All other sections and examples in this specification are informative.

## 1.1 Glossary

The following terms are defined in [\[MS-GLOS\]](#):

**ASCII**  
**big-endian**  
**device driver**  
**driver package**  
**fully qualified domain name (FQDN)**  
**Hypertext Transfer Protocol (HTTP)**  
**Hypertext Transfer Protocol over Secure Sockets Layer (HTTPS)**  
**INF file**  
**Internet Protocol version 4 (IPv4)**  
**little-endian**  
**NetBIOS**  
**print server**  
**print system**  
**printer driver**  
**proxy**  
**registry**  
**Unicode**  
**Universal Naming Convention (UNC)**  
**Uniform Resource Locator (URL)**  
**UTF-16LE (Unicode Transformation Format, 16-bits, little-endian)**  
**web server**

The following terms are specific to this document:

**CAB File:** See **cabinet file**.

**Cabinet File:** A file with the suffix .cab that acts as a container for other files. A **cabinet file** serves as a compressed archive for a group of files. For more information on the format of **cabinet files**, see [\[MSDN-CAB\]](#).

**Internet Printing Protocol (IPP):** A standard protocol for printing and for the management of print jobs and printer settings over the Internet. It is built on the **Hypertext Transfer Protocol (HTTP)**.

**MAY, SHOULD, MUST, SHOULD NOT, MUST NOT:** These terms (in all caps) are used as specified in [RFC2119](#). All statements of optional behavior use either MAY, SHOULD, or SHOULD NOT.

## 1.2 References

References to Microsoft Open Specifications documentation do not include a publishing year because links are to the latest version of the documents, which are updated frequently. References to other documents include a publishing year when one is available.

A reference marked "(Archived)" means that the reference document was either retired and is no longer being maintained or was replaced with a new document that provides current implementation details. We archive our documents online [\[Windows Protocol\]](#).

### 1.2.1 Normative References

We conduct frequent surveys of the normative references to assure their continued availability. If you have any issue with finding a normative reference, please contact [dochelp@microsoft.com](mailto:dochelp@microsoft.com). We will assist you in finding the relevant information.

[MS-DTYP] Microsoft Corporation, "[Windows Data Types](#)".

[MS-RPRN] Microsoft Corporation, "[Print System Remote Protocol](#)".

[MS-RRP] Microsoft Corporation, "[Windows Remote Registry Protocol](#)".

[RFC793] Postel, J., "Transmission Control Protocol", STD 7, RFC 793, September 1981, <http://www.ietf.org/rfc/rfc0793.txt>

[RFC2119] Bradner, S., "Key words for use in RFCs to Indicate Requirement Levels", BCP 14, RFC 2119, March 1997, <http://www.rfc-editor.org/rfc/rfc2119.txt>

[RFC2396] Berners-Lee, T., Fielding, R., and Masinter, L., "Uniform Resource Identifiers (URI): Generic Syntax", RFC 2396, August 1998, <http://www.ietf.org/rfc/rfc2396.txt>

[RFC2616] Fielding, R., Gettys, J., Mogul, J., et al., "Hypertext Transfer Protocol -- HTTP/1.1", RFC 2616, June 1999, <http://www.ietf.org/rfc/rfc2616.txt>

[RFC2617] Franks, J., Hallam-Baker, P., Hostetler, J., et al., "HTTP Authentication: Basic and Digest Access Authentication", RFC 2617, June 1999, <http://www.ietf.org/rfc/rfc2617.txt>

[RFC2818] Rescorla, E., "HTTP Over TLS", RFC 2818, May 2000, <http://www.ietf.org/rfc/rfc2818.txt>

### 1.2.2 Informative References

[MS-GLOS] Microsoft Corporation, "[Windows Protocols Master Glossary](#)".

[MSDN-CAB] Microsoft Corporation, "Microsoft Cabinet Format", <http://msdn.microsoft.com/en-us/library/bb417343.aspx>

[MSDN-INF] Microsoft Corporation, "About INF Files", <http://msdn.microsoft.com/en-us/library/aa376858.aspx>

[MSDN-PRNINF] Microsoft Corporation, "Printer INF Files", <http://msdn.microsoft.com/en-us/library/aa506008.aspx>

[MSDN-RTV] Microsoft Corporation, "Registry Value Types", <http://msdn.microsoft.com/en-us/library/ms724884.aspx>

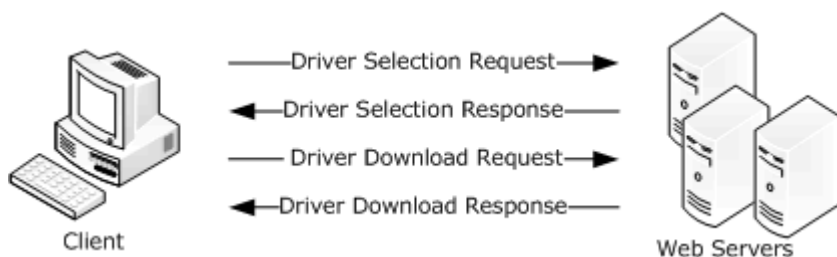
[RFC2781] Hoffman, P., and Yergeau, F., "UTF-16, an encoding of ISO 10646", RFC 2781, February 2000, <http://www.ietf.org/rfc/rfc2781.txt>

[RFC2910] Herriot, R., Ed., Butler, S., and Moore, P., "Internet Printing Protocol/1.1: Encoding and Transport", RFC 2910, September 2000, <http://www.ietf.org/rfc/rfc2910.txt>

[RFC2911] Hastings, T., Ed., Herriot, R., deBry, R., et al., "Internet Printing Protocol/1.1: Model and Semantics", RFC 2911, September 2000, <http://www.ietf.org/rfc/rfc2911.txt>

### 1.3 Overview

The Web Point-and-Print Protocol provides a mechanism for clients to download printer driver software from a server in the client network or from a website, or directly by print devices. <1>



**Figure 1: Client selection and download of printer driver**

A Web Point-and-Print Protocol **web server** maintains a list of printer drivers. A client makes a [Driver Selection Request \(section 2.2.4\)](#) to obtain a printer driver of a particular type and for a particular client configuration. If the server locates a printer driver that matches these requirements, the server redirects the client to the location of the printer driver through the [Driver Selection Response \(section 2.2.5\)](#).

After a suitable printer driver has been found, the client downloads it by issuing a [Driver Download Request \(section 2.2.6\)](#). The driver is supplied in a [Driver Download Response \(section 2.2.7\)](#).

### 1.4 Relationship to Other Protocols

The Web Point-and-Print Protocol is dependent on HTTP specifications [\[RFC2616\]](#) and [\[RFC2617\]](#), and on TCP/IP specification [\[RFC793\]](#). There are no protocols that are dependent on the Web Point-and-Print Protocol.

### 1.5 Prerequisites/Preconditions

The Web Point-and-Print Protocol is built on HTTP and therefore has the prerequisites specified in [\[RFC2616\]](#) that are common to HTTP communications.

It is a requirement that, before the protocol is invoked, a Web Point-and-Print Protocol client has obtained both the name of a server that supports the Web Point-and-Print Protocol and the name of a printer. How a client obtains these names is not addressed in this specification.



## 1.6 Applicability Statement

The Web Point-and-Print Protocol is applicable in environments that require distribution of printer driver software where other mechanisms (such as the [Print System Remote Protocol](#); for more information, see [\[MS-RPRN\]](#)) are not available.

## 1.7 Versioning and Capability Negotiation

The Web Point-and-Print Protocol does not have versioning and does not contain locale-dependent information.

## 1.8 Vendor-Extensible Fields

The Web Point-and-Print Protocol does not support vendor-extensible fields.

## 1.9 Standards Assignments

The Web Point-and-Print Protocol uses the following default assignments.

Parameter	Value	Reference
TCP/IP port for Hypertext Transfer Protocol (HTTP)	80	As specified in <a href="#">[RFC2616]</a> section 3.2.2.
TCP/IP port for <b>Hypertext Transfer Protocol over Secure Socket Layer (HTTPS)</b>	443	As specified in <a href="#">[RFC2818]</a> section 2.3.

## 2 Messages

### 2.1 Transport

The Web Point-and-Print Protocol uses the following transports for HTTP sequences:

- HTTP over TCP/IP
- HTTPS over TCP/IP

### 2.2 Message Syntax

The Web Point-and-Print Protocol issues its requests from the client via **Uniform Resource Locators (URLs)** in an HTTP GET request and the associated query qualifier. The server returns a response via an HTTP response message, which returns either a Location header in a 302 (redirect) response or an HTTP error 500 if the original HTTP GET request cannot be processed by the server. For HTTP, see [\[RFC2616\]](#).

#### 2.2.1 Common Data Types

Unless otherwise noted, the following statements apply to this specification:

- All strings that are defined in this protocol MUST consist of characters that are encoded in **Unicode UTF-16LE** and MUST be null-terminated. Each code point in a string, including null terminators, MUST occupy 16 bits. For more information, see [\[RFC2781\]](#) section 2.1.
- A list of strings is referred to as a **MULTI\_SZ** ([\[MS-DTYP\]](#) section 2.3.8) in this protocol. In a **MULTI\_SZ**, the characters that make up the string N+1 MUST directly follow the terminating null character of string N. The last string in a **MULTI\_SZ** MUST be terminated by two null characters.
- All parameters or members that specify the number of characters in a string or **MULTI\_SZ** MUST specify the number of characters in the string, including the terminating null characters.
- All constraints that specify the maximum number of characters in a string or **MULTI\_SZ** MUST specify the number of characters in the string, including the terminating null characters.
- All parameters or members that specify the number of bytes in buffers that contain a string or **MULTI\_SZ** MUST specify the number of bytes in the buffer, including the terminating null characters.

#### 2.2.2 ClientInfo Value

There are four parameters encoded in a ClientInfo value:

- The major version number of the client operating system.
- The minor version number of the client operating system.
- A value specifying the type of client platform.
- A value specifying the client processor architecture.

Each parameter is an 8-bit unsigned value. For transmission on the wire, these values are packed into 32-bits to form a ClientInfo value, according to the following equation:

ClientInfo = (major version) \* (2^24) + (minor version) \* (2^16) + (client platform) \* (2^8) + (client processor architecture)

The major version number of the client operating system is dependent on the platform on which the client is running. <2>

The minor version number of the client operating system is dependent on the platform on which the client is running. <3>

The client platform value is dependent on the platform on which the client is running. <4>

The client processor architecture value MUST be one of the following. <5>

Value	Client processor architecture
0x00	Intel x86
0x01	MIPS
0x02	ALPHA
0x03	PPC
0x06	Itanium-based
0x09	AMD64 or Intel x64
0x05	ARM

### 2.2.3 Registry Type Values

The following table specifies valid registry type values for use in the **dwType** field of the [PrnDataRoot structure \(section 2.2.7.1.2\)](#).

Registry type name/value	Description
REG_NONE 0x00000000	No value type is defined.
REG_SZ 0x00000001	A string.
REG_EXPAND_SZ 0x00000002	A string that can contain unexpanded references to environment variables, for example, "%PATH%".
REG_BINARY 0x00000003	Binary data in any form.
REG_DWORD 0x00000004	A 32-bit number.
REG_DWORD_LITTLE_ENDIAN 0x00000004	A 32-bit number in <b>little-endian</b> format; equivalent to REG_DWORD.
REG_DWORD_BIG_ENDIAN	A 32-bit number in <b>big-endian</b> format.

Registry type name/value	Description
0x00000005	
REG_LINK 0x00000006	Symbolic link to a <b>registry</b> key.
REG_MULTI_SZ 0x00000007	A <b>REG_MULTI_SZ</b> structure ( <a href="#">[MS-RRP]</a> section 2.2.6).
REG_RESOURCE_LIST 0x00000008	A <b>device driver</b> resource list.
REG_QWORD 0x0000000B	A 64-bit number.
REG_QWORD_LITTLE_ENDIAN 0x0000000B	A 64-bit number in little-endian format; equivalent to REG_QWORD.

## 2.2.4 Driver Selection Request

The Driver Selection Request sends the printer driver selection criteria to the server. The message is a standard HTTP GET request, as specified in [\[RFC2616\]](#) section 9.3. The format of the HTTP request URL is specified by the grammar rule for **PrinterDriverQuery**, as follows:

```
PrinterDriverQuery = [PRINT_SERVER] PRINTER_RESOURCE "?" DRIVER_QUERY
PRINT_SERVER      = "http:" "/" host [":" port]
PRINTER_RESOURCE  = abs_path
DRIVER_QUERY      = "createexe" "&" CLIENT_INFO
CLIENT_INFO       = 1*DIGIT
```

Here, "1\*DIGIT" indicates "one or more occurrences of DIGIT". For the definitions of **host**, **port**, **abs\_path**, and **DIGIT**, see [\[RFC2616\]](#) sections 2.2 and 3.2, and [\[RFC2396\]](#) sections 3.2.2 and 3.3.

How the client determines the **host**, **port**, and **abs\_path** is not specified by this protocol. Typically, the port is either the HTTP default port "80" or another port that is configured by an administrator.

**DRIVER\_QUERY**: Forms the HTTP query component, as specified in [\[RFC2396\]](#) section 3.4, which constrains the selection of printer driver instances for the printer resource.

**PRINT\_SERVER**: Specifies the address of the Web Point-and-Print Protocol server, whether or not the request is to be routed through a **proxy**.

**PRINTER\_RESOURCE**: Specifies the name of the printer resource.

**CLIENT\_INFO**: Contains the environmental information on the client that is making the request, constructed as a **ClientInfo** value and formatted as the **ASCII** representation of a decimal integer. Additionally, it **MUST** be computed as specified in section [2.2.2](#).

## 2.2.5 Driver Selection Response

The Driver Selection Response packet is a standard HTTP redirect response, in the HTTP **Location** field, to the URL of a file that contains the printer driver software and the information necessary to install the printer driver on the client. Specifically, the response **MUST** be a **Redirection 302**

response, as defined in [\[RFC2616\]](#) section 10.3.3, and the HTTP **Location** field MUST point to the printer driver file.

## 2.2.6 Driver Download Request

This MUST be a standard HTTP GET request to the URL specified in the Location header received in the [Driver Selection Response](#). For more information, see [\[RFC2616\]](#) section 10.3.3.

## 2.2.7 Driver Download Response

This MUST be a standard HTTP response, as specified in [\[RFC2616\]](#). It MUST be returned in response to the driver download HTTP GET request. If the response return code is 200 (success), the response entity body MUST contain the requested driver.

The HTTP redirect is to a URL with content-type set to application/octet-stream, which specifies a **cabinet file** (for more information, see [\[MSDN-CAB\]](#)) that MUST have a .webpnp extension. The cabinet file includes the following:

- Printer driver software files.
- An **INF file** that is used during installation of the driver software. For more information, see [\[MSDN-INF\]](#).
- A BIN file that provides the information needed to access printer setup/configuration data. For the structure of this file, see section [2.2.7.1](#).
- A DAT file that provides additional **print server** and printer setup/configuration data. For the structure of this file, see section [2.2.7.2](#).

### 2.2.7.1 BIN File Format

A BIN file contains the information needed to access printer setup and configuration data. The format of that information is shown below. All fields are in little-endian format.

File Header:

0	1	2	3	4	5	6	7	8	9	10	11	12	13	14	15	16	17	18	19	20	21	22	23	24	25	26	27	28	29	30	31
0x00000001																															
cItems																															
UserDevMode (variable)																															
...																															
PrnDataRoot (variable)																															
...																															

**cItems (4 bytes):** The number of [PrnDataRoot \(section 2.2.7.1.2\)](#) structures contained in the BIN file. This value can be zero.

**UserDevMode (variable):** A [UserDevMode \(section 2.2.7.1.1\)](#) structure.

**PrnDataRoot (variable):** A PrnDataRoot structure, which is repeated **cItems** times in this field.

### 2.2.7.1.1 UserDevMode Structure

The UserDevMode structure is used for general printer information.

0	1	2	3	4	5	6	7	8	9	10	11	12	13	14	15	16	17	18	19	20	21	22	23	24	25	26	27	28	29	30	31
cbSize																															
reserved0																															
reserved1																															
reserved2																															
pDataOffset																															
cbData																															
Data (variable)																															
...																															

**cbSize (4 bytes):** Total number of bytes in this UserDevMode structure.

**reserved0 (4 bytes):** MUST be set to zero when sent and MUST be ignored on receipt by the server.

**reserved1 (4 bytes):** MUST be set to zero when sent and MUST be ignored on receipt by the server.

**reserved2 (4 bytes):** MUST be set to zero when sent and MUST be ignored on receipt by the server.

**pDataOffset (4 bytes):** A 32-bit unsigned integer that MUST specify the number of bytes from the start of the UserDevMode structure to the **Data** field.

**cbData (4 bytes):** Number of bytes in the **Data** field.

**Data (variable):** A printer device settings structure; for details, see the [\\_DEVMODE](#) structure in [\[MS-RPRN\]](#) section 2.2.2.1.

This field MUST be padded to the next 64-bit boundary.

### 2.2.7.1.2 PrnDataRoot Structure

The PrnDataRoot structure describes a printer configuration value in the registry structure used by a printer driver that is associated with a printer. This structure is repeated for a count specified by the **cItems** member of the [BIN file \(section 2.2.7.1\)](#) header.

Printer configuration values control the behavior of the printer driver in a printer driver-specific way. A printer driver can define an arbitrary number of printer configuration values.

Printer configuration values are uniquely identified by the following attributes:

**Key:** An arbitrary string defined by the printer driver associated with a printer.

**ValueName:** A string that contains the name of the printer configuration value.

0	1	2	3	4	5	6	7	8	9	10	11	12	13	14	15	16	17	18	19	20	21	22	23	24	25	26	27	28	29	30	31
cbSize																															
dwType																															
KeyOffset																															
ValueNameOffset																															
pDataOffset																															
cbData																															
Key (variable)																															
...																															
ValueName (variable)																															
...																															
Data (variable)																															
...																															

**cbSize (4 bytes):** Total number of bytes in this PrnDataRoot structure.

**dwType (4 bytes):** A value that specifies a [registry type value \(section 2.2.3\)](#). For additional information about registry types, see [\[MSDN-RTV\]](#).

**KeyOffset (4 bytes):** A 32-bit unsigned integer that specifies the number of bytes from the start of the PrnDataRoot structure to the **Key** field.

**ValueNameOffset (4 bytes):** A 32-bit unsigned integer that specifies the number of bytes from the start of the PrnDataRoot structure to the **ValueName** field.

**pDataOffset (4 bytes):** A 32-bit unsigned integer that specifies the number of bytes from the start of the PrnDataRoot structure to the **Data** field.

**cbData (4 bytes):** The number of bytes in the **Data** field.

**Key (variable):** A string that contains the name of the key that corresponds to the printer configuration value identified by **ValueName**. This field **MUST** be padded to the next 64-bit boundary.

**ValueName (variable):** A string that contains the name of a printer configuration value for the printer driver. This field **MUST** be padded to the next 64-bit boundary.

**Data (variable):** A field containing data for the printer configuration value identified by **ValueName**. The data contained in this field **MUST** be interpreted according to the registry value type that is specified by the **dwType** field. This field **MUST** be padded to the next 64-bit boundary.

### 2.2.7.2 DAT File Format

A DAT file contains options for installing a printer driver on the client machine. The following restrictions apply to DAT files:

- The name of the DAT file **MUST** be "cab\_ipp.dat".
- The DAT file **MUST** be a text file, in Unicode UTF-16LE character encoding.

DAT file options are specified as follows:

```
/if
/x
/Q<PackageList>
/b<PrinterBaseName>
/f<InfName>
/r<PrinterPortName>
/m<DriverName>
/n<UncName>
/a<BinName>
/q
```

**Note** These options are presented in the form of a list for readability. This is not to specify that a newline character is required to separate each option in a DAT file.

Option parameters are defined as follows:

- **PackageList:** A list of **CAB file** names containing **driver packages** included in the **.webpnp** file. The individual CAB file names are separated by ";".
- **PrinterBaseName:** "\\http://<ServerName>\<PrinterName>", if the HTTP transport is being used; or "\\https://<ServerName>\<PrinterName>", if the HTTPS transport is being used.
- **ServerName:** The **NetBIOS** name, **fully qualified domain name (FQDN)**, or **IPv4** address.
- **PrinterName:** The name of the printer.



- **InfName:** The name of the INF file that is included in the **.webpnp** file.
- **PrinterPortName:** The URL of the printer.
- **DriverName:** The name of the printer driver.
- **UncName:** The **Universal Naming Convention (UNC)** path of the server.
- **BinName:** The name of the [BIN file](#) that is included in the **.webpnp** file.

The following syntax rules apply to DAT file options and parameters:

- The individual options can appear in any order.
- All options MUST be specified, except `"/x"`, `"/q"` and `"/Q"`.
- The individual options MUST be separated by white space, which includes the UTF-16LE character codes 0x0020, 0x000D, and 0x000A, and combinations thereof.
- White space between the switch of an option (for example, `"/r"`) and its parameter (for example, the **PrinterPortName**) MUST be accepted.
- A parameter MUST be surrounded by quotes if it contains white space.
- Quotes around a parameter that does not contain white space MUST be accepted.
- The absence of quotes around a parameter that does not contain white space MUST be accepted.
- The option `"/if"` conveys no meaning in the protocol.

The following syntax rules apply to the `"/x"`, `"/q"` and `"/Q"` options specifically:

- Either the two options `"/x"` and `"/q"` together, or the single option `"/Q"`, MUST be specified.
- If `"/x"` and `"/q"` are specified `"/Q"` MUST NOT be specified.
- If `"/Q"` is specified `"/x"` and `"/q"` MUST NOT be specified.
- The options `"/x"` and `"/q"` together indicate the installation of a printer driver. The name and location of the printer driver MUST be specified with the parameters of other options.
- The option `"/Q"` specifies the installation of a driver package.
- `"/Q"` MUST NOT be specified if the major version parameter of the [ClientInfo](#) value (section [2.2.2](#)) in the request is less than 6.

## 3 Protocol Details

### 3.1 Client Details

#### 3.1.1 Abstract Data Model

None.

#### 3.1.2 Timers

None.

#### 3.1.3 Initialization

None.

#### 3.1.4 Higher-Layer Triggered Events

A client invocation is the result of local client application activity. The client application specifies the driver selection parameters. The syntax and semantics of these parameters are specified in section [2.2.4](#). No other higher-layer triggered events are defined.

#### 3.1.5 Message Processing Events and Sequencing Rules

As specified in section [1.5](#), the client MUST be preconfigured with the URL of a Web Point-and-Print Protocol server. To initiate the Web Point-and-Print Protocol, the client MUST send a [Driver Selection Request \(section 2.2.4\)](#) message to the web server with which it has been configured.

If the server returns an HTTP status other than 302 (found), the client MUST NOT process any Location header in the HTTP response, and it MUST return an error code to the client application.

If the server returns an HTTP redirect (indicated by an HTTP status code of 302), the client MUST parse the received HTTP response to retrieve the Location header. If a Location header is not found in the response, the client MUST return an error to the invoking application. Otherwise, the client MUST send a [Driver Download Request \(section 2.2.6\)](#) to the server identified in the Location header of the received HTTP response.

If the HTTP response returned to the client has a status of 200 (success), the entity body received in the HTTP response MUST be returned to the invoking application as the printer driver package. If the HTTP response is anything other than success, the client MUST return an error to the invoking client application.

#### 3.1.6 Timer Events

None.

#### 3.1.7 Other Local Events

No additional local events are used on the client beyond the events maintained in the underlying HTTP.

## 3.2 Server Details

### 3.2.1 Abstract Data Model

This section describes a conceptual model of a possible data organization that an implementation might need to maintain to participate in this protocol. The organization described in this section is provided to facilitate the explanation of how the protocol behaves. This specification does not mandate that implementations adhere to this model as long as their external behavior is consistent with that described in this specification.

The Web Point-and-Print Protocol depends on an abstract data model that maintains printers. The print server **MUST** behave as if it hosted the following objects in the specified hierarchy.

**List of Printers:** Each printer represents a physical print device or a number of homogeneous physical devices that are installed on the print server. Each printer object **MUST** maintain the following data elements:

- A name that uniquely identifies the printer.
- A reference to a printer driver object for the printer.
- Per-user printer device settings; for details, see the [\\_DEVMODE](#) structure in [\[MS-RPRN\]](#) section 2.2.2.1.

**List of Drivers:** Each printer driver represents the software component responsible for converting print content submitted by applications into device-specific commands. Each printer driver object **MUST** maintain the following data elements:

- A name that uniquely identifies the printer driver.
- A list of well-known modules (that is, rendering module, configuration module, and data module).
- Additionally, each printer driver object **SHOULD** maintain the following optional data elements:
  - A list of dependent files.
  - Information on the printer driver manufacturer, printer driver time stamp, and version.

The abstract data model **MUST** be able to relate each printer to a single printer driver. For more information, see [\[MS-RPRN\]](#) section 3.1.1.

### 3.2.2 Timers

None.

### 3.2.3 Initialization

The server **MUST** listen for HTTP and HTTPS requests.

### 3.2.4 Higher-Layer Triggered Events

None.

### 3.2.5 Message Processing Events and Sequencing Rules

The client initiates the Web Point-and-Print Protocol by sending a [Driver Selection Request \(section 2.2.4\)](#) message to the server. On receiving this message, the server MUST validate parameters as follows:

- The **PRINTER\_RESOURCE** parameter MUST be a valid absolute path of a printer resource.
- The **CLIENT\_INFO** section of the URL MUST be a supported [ClientInfo \(section 2.2.2\)](#) value.

If parameter validation fails, the server MUST fail the operation immediately, returning HTTP error 500 (Internal Server Error). If parameter validation succeeds, the server MUST compose a response to the client as follows:

- The server MUST use the received **CLIENT\_INFO** parameter to determine the location of the appropriate printer driver. The mechanism is implementation specific. If a matching driver is found, the server MUST create a [Driver Selection Response \(section 2.2.5\)](#), replying to the client with an HTTP 302 redirect.<6>
- If a matching driver cannot be found, the server MUST fail the operation, replying to the client with HTTP error 500 (Internal Server Error).

Processing of a [Driver Download Request](#) MUST follow the rules specified for GET processing, as specified in [\[RFC2616\]](#) section 9.3. The format of the data returned in the response is specified in section [2.2.7](#).

### 3.2.6 Timer Events

None.

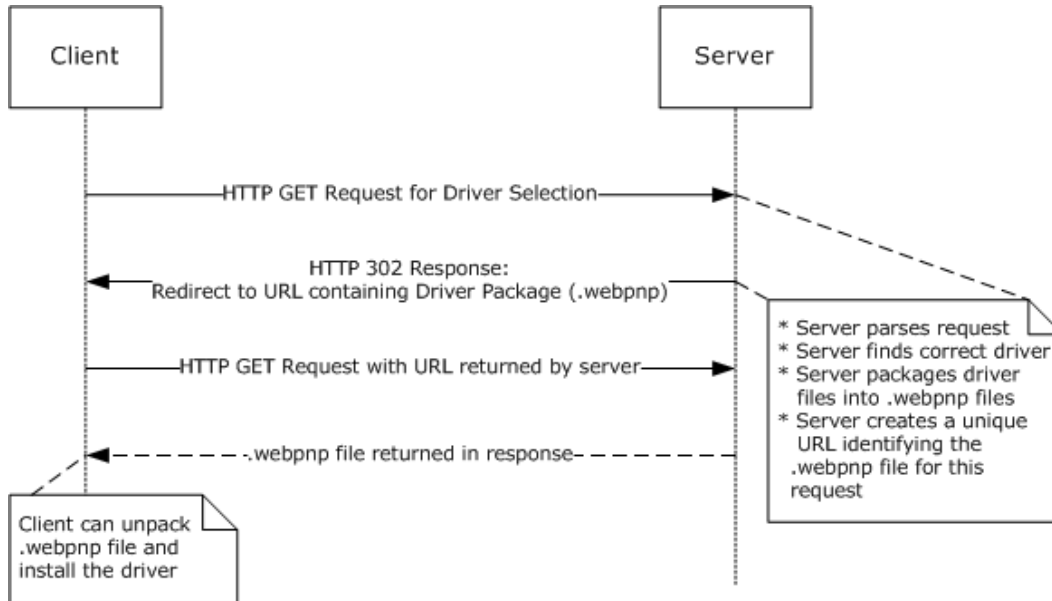
### 3.2.7 Other Local Events

No additional local events are used on the client beyond the events maintained in the underlying HTTP.

## 4 Protocol Examples

### 4.1 Client/Server Interaction

The following diagram illustrates the interaction sequence to obtain a printer driver using the Web Point-and-Print Protocol.



**Figure 2: Obtaining a printer driver**

### 4.2 Client/Server Messages

#### 4.2.1 Client

The following text is a sample client [Driver Selection Request](#), depicted in the figure of section [4.1](#). An HTTP **GET** request is used for sending printer driver selection criteria to the server. For more information, see section [2.2.4](#).

```
GET /printers/printerModelXXX/.printer?createexe&83952128
```

#### 4.2.2 Server

The following text is a sample server [Driver Selection Response](#) to a client [Driver Selection Request](#), as depicted in the figure of section [4.1](#). The server performs an HTTP **Redirection 302** response to the URL of a file that contains the requested printer driver and installation software. For more information, see section [2.2.5](#).

```
HTTP/1.1 302 Object Moved
Content-Length: 176
Content-Type: text/html
Location: http://1.1.1.2/printers/PrtCabs/85CCX862.webpnp
Server: Microsoft-IIS/6.0
X-Powered-By: ASP.NET
```

Date: Wed, 12 Jul 2006 21:44:42 GMT  
Connection: close  
<head><title>Document Moved</title></head>  
<body><h1>Object Moved</h1>This document may be found  
    <a HREF="http://1.1.1.2/printers/PrtCabs/85CCX862.webpnp">here</a>  
</body>  
<END OF ENTITY>

## **5 Security**

### **5.1 Security Considerations for Implementers**

The Web Point-and-Print Protocol does not provide any facilities for mutual authentication, so server identities cannot be verified.

### **5.2 Index of Security Parameters**

There are no security parameters in the Web Point-and-Print Protocol.

## 6 Appendix A: Product Behavior

The information in this specification is applicable to the following Microsoft products or supplemental software. References to product versions include released service packs:

- Windows 2000 operating system
- Windows 2000 Server operating system
- Windows XP operating system
- Windows Server 2003 operating system
- Windows Vista operating system
- Windows Server 2008 operating system
- Windows 7 operating system
- Windows Server 2008 R2 operating system
- Windows 8 operating system
- Windows Server 2012 operating system
- Windows 8.1 operating system
- Windows Server 2012 R2 operating system

Exceptions, if any, are noted below. If a service pack or Quick Fix Engineering (QFE) number appears with the product version, behavior changed in that service pack or QFE. The new behavior also applies to subsequent service packs of the product unless otherwise specified. If a product edition appears with the product version, behavior is different in that product edition.

Unless otherwise specified, any statement of optional behavior in this specification that is prescribed using the terms SHOULD or SHOULD NOT implies product behavior in accordance with the SHOULD or SHOULD NOT prescription. Unless otherwise specified, the term MAY implies that the product does not follow the prescription.

<1> [Section 1.3](#): The Web Point-and-Print Protocol is used when the [Print System Remote Protocol](#) (for more information, see [\[MS-RPRN\]](#)) is not available due to policy restrictions, policy restrictions on the use of RPC, or other restrictions on printing. When the Web Point-and-Print Protocol is used to install the printer drivers, the print spooler uses the **Internet Printing Protocol (IPP)** (for more information, see [\[RFC2910\]](#) and [\[RFC2911\]](#)) to communicate with the actual print device.

<2> [Section 2.2.2](#): Windows clients use one of the following major version values:

Value	Major version
0x05	Windows 2000 Server, Windows XP, or Windows Server 2003
0x06	Windows Vista, Windows Server 2008, Windows 7, Windows Server 2008 R2, Windows 8, Windows Server 2012, Windows 8.1, or Windows Server 2012 R2

<3> [Section 2.2.2](#): Windows clients use one of the following minor version values:



Value	Minor version
0x00	Windows 2000 Server, Windows Vista, or Windows Server 2008
0x01	Windows XP, Windows 7, or Windows Server 2008 R2
0x02	Windows Server 2003, Windows 8, Windows Server 2012, Windows 8.1, or Windows Server 2012 R2

<4> [Section 2.2.2:](#) Windows clients use one of the following client platform values:

Value	Client platform
0x01	Windows 95, Windows 98, or Windows Millennium Edition.
0x02	Windows 2000, Windows XP, Windows Server 2003, Windows Vista, Windows Server 2008, Windows 7, Windows Server 2008 R2, Windows 8, Windows Server 2012, Windows 8.1, or Windows Server 2012 R2

Windows Vista, and Windows Server 2008, Windows 7, Windows Server 2008 R2, Windows 8, Windows Server 2012, Windows 8.1, and Windows Server 2012 R2:

- A "client platform" value of 0x01 is invalid.
- All other "client platform" values are treated as 0x02.

Windows 2000, Windows 2000 Server, Windows XP, and Windows Server 2003:

- All "client platform" values different from 0x01 or 0x02 are treated as 0x02.
- If "client platform" is 0x01, the "client processor architecture" value will be ignored and will always be treated as "Intel x86".

<5> [Section 2.2.2:](#) Windows client processor architecture values:

Not supported on Windows 2000 or Windows 2000 Server:

- AMD64

Not supported on Windows Server 2003, Windows Vista, Windows Server 2008, Windows 7, Windows Server 2008 R2, Windows 8, Windows Server 2012, Windows 8.1, or Windows Server 2012 R2:

- MIPS
- ALPHA
- PPC

Not supported on Windows 2000, Windows 2000 Server, Windows Server 2003, Windows Vista, Windows Server 2008, Windows 7, or Windows Server 2008 R2:

- ARM

<6> [Section 3.2.5:](#) The Windows implementation extracts information from printer driver INF files to determine the appropriate drivers to return to the client. For information on printer driver INF files, see [\[MSDN-PRNINF\]](#).

## 7 Change Tracking

No table of changes is available. The document is either new or has had no changes since its last release.

## 8 Index

### A

Abstract data model  
[client](#) 18  
[server](#) 19  
[Applicability](#) 9

### B

[BIN file format](#) 13  
[BIN File Format packet](#) 13

### C

[Capability negotiation](#) 9  
[Change tracking](#) 26  
Client  
[abstract data model](#) 18  
[client/server interaction example](#) 21  
[client/server messages example](#) 21  
[example](#) 21  
[higher-layer triggered events](#) 18  
[initialization](#) 18  
[local events](#) 18  
[message processing](#) 18  
[sequencing rules](#) 18  
[timer events](#) 18  
[timers](#) 18  
[ClientInfo](#) 10

### D

[DAT file format](#) 16  
Data model - abstract  
[client](#) 18  
[server](#) 19  
[Data types](#) 10  
[Driver download request](#) 13  
[Driver download response](#) 13  
[Driver selection request](#) 12  
[Driver selection response](#) 12

### E

Examples  
[client/server interaction](#) 21  
[client/server messages](#) 21

### F

[Fields - vendor-extensible](#) 9  
File formats  
[BIN](#) 13  
[DAT](#) 16

### G

[Glossary](#) 6

### H

Higher-layer triggered events  
[client](#) 18  
[server](#) 19

### I

[Implementer - security considerations](#) 23  
[Index of security parameters](#) 23  
[Informative references](#) 7  
Initialization  
[client](#) 18  
[server](#) 19  
[Introduction](#) 6

### L

Local events  
[client](#) 18  
[server](#) 20

### M

Message processing  
[client](#) 18  
[server](#) 20  
Messages  
[syntax](#) 10  
[transport](#) 10

### N

[Normative references](#) 7

### O

[Overview \(synopsis\)](#) 8

### P

[Parameter index - security](#) 23  
[Preconditions](#) 8  
[Prerequisites](#) 8  
[PrnDataRoot packet](#) 15  
[Product behavior](#) 24

### R

References  
[informative](#) 7  
[normative](#) 7  
[REG\\_BINARY](#) 11  
[REG\\_DWORD](#) 11  
[REG\\_DWORD\\_BIG\\_ENDIAN](#) 11  
[REG\\_DWORD\\_LITTLE\\_ENDIAN](#) 11  
[REG\\_EXPAND\\_SZ](#) 11  
[REG\\_LINK](#) 11

[REG\\_MULTI\\_SZ](#) 11  
[REG\\_NONE](#) 11  
[REG\\_QWORD](#) 11  
[REG\\_QWORD\\_LITTLE\\_ENDIAN](#) 11  
[REG\\_RESOURCE\\_LIST](#) 11  
[REG\\_SZ](#) 11  
[Relationship to other protocols](#) 8

## S

### Security

[implementer considerations](#) 23  
[parameter index](#) 23

### Sequencing rules

[client](#) 18  
[server](#) 20

### Server

[abstract data model](#) 19  
[client/server interaction example](#) 21  
[client/server messages example](#) 21  
[example](#) 21  
[higher-layer triggered events](#) 19  
[initialization](#) 19  
[local events](#) 20  
[message processing](#) 20  
[sequencing rules](#) 20  
[timer events](#) 20  
[timers](#) 19

[Standards assignments](#) 9

[Syntax](#) 10

## T

### Timer events

[client](#) 18  
[server](#) 20

### Timers

[client](#) 18  
[server](#) 19

[Tracking changes](#) 26

[Transport](#) 10

### Triggered events - higher-layer

[client](#) 18  
[server](#) 19

## U

[UserDevMode packet](#) 14

## V

[Vendor-extensible fields](#) 9

[Versioning](#) 9