

[MS-CSSP-Diff]:

Credential Security Support Provider (CredSSP) Protocol

Intellectual Property Rights Notice for Open Specifications Documentation

- **Technical Documentation.** Microsoft publishes Open Specifications documentation (“this documentation”) for protocols, file formats, data portability, computer languages, and standards support. Additionally, overview documents cover inter-protocol relationships and interactions.
- **Copyrights.** This documentation is covered by Microsoft copyrights. Regardless of any other terms that are contained in the terms of use for the Microsoft website that hosts this documentation, you can make copies of it in order to develop implementations of the technologies that are described in this documentation and can distribute portions of it in your implementations that use these technologies or in your documentation as necessary to properly document the implementation. You can also distribute in your implementation, with or without modification, any schemas, IDLs, or code samples that are included in the documentation. This permission also applies to any documents that are referenced in the Open Specifications documentation.
- **No Trade Secrets.** Microsoft does not claim any trade secret rights in this documentation.
- **Patents.** Microsoft has patents that might cover your implementations of the technologies described in the Open Specifications documentation. Neither this notice nor Microsoft's delivery of this documentation grants any licenses under those patents or any other Microsoft patents. However, a given Open Specifications document might be covered by the Microsoft [Open Specifications Promise](#) or the [Microsoft Community Promise](#). If you would prefer a written license, or if the technologies described in this documentation are not covered by the Open Specifications Promise or Community Promise, as applicable, patent licenses are available by contacting iplg@microsoft.com.
- **License Programs.** To see all of the protocols in scope under a specific license program and the associated patents, visit the [Patent Map](#).
- **Trademarks.** The names of companies and products contained in this documentation might be covered by trademarks or similar intellectual property rights. This notice does not grant any licenses under those rights. For a list of Microsoft trademarks, visit www.microsoft.com/trademarks.
- **Fictitious Names.** The example companies, organizations, products, domain names, email addresses, logos, people, places, and events that are depicted in this documentation are fictitious. No association with any real company, organization, product, domain name, email address, logo, person, place, or event is intended or should be inferred.

Reservation of Rights. All other rights are reserved, and this notice does not grant any rights other than as specifically described above, whether by implication, estoppel, or otherwise.

Tools. The Open Specifications documentation does not require the use of Microsoft programming tools or programming environments in order for you to develop an implementation. If you have access to Microsoft programming tools and environments, you are free to take advantage of them. Certain Open Specifications documents are intended for use in conjunction with publicly available standards specifications and network programming art and, as such, assume that the reader either is familiar with the aforementioned material or has immediate access to it.

Support. For questions and support, please contact dochelp@microsoft.com.

Revision Summary

Date	Revision History	Revision Class	Comments
12/18/2006	0.1	New	Version 0.1 release
3/2/2007	1.0	Major	Version 1.0 release
4/3/2007	1.1	Minor	Version 1.1 release
5/11/2007	1.2	Minor	Version 1.2 release
6/1/2007	1.2.1	Editorial	Changed language and formatting in the technical content.
7/3/2007	1.2.2	Editorial	Changed language and formatting in the technical content.
7/20/2007	1.2.3	Editorial	Changed language and formatting in the technical content.
8/10/2007	1.2.4	Editorial	Changed language and formatting in the technical content.
9/28/2007	1.2.5	Editorial	Changed language and formatting in the technical content.
10/23/2007	1.3	Minor	Clarified the meaning of the technical content.
11/30/2007	1.3.1	Editorial	Changed language and formatting in the technical content.
1/25/2008	1.3.2	Editorial	Changed language and formatting in the technical content.
3/14/2008	1.3.3	Editorial	Changed language and formatting in the technical content.
5/16/2008	1.3.4	Editorial	Changed language and formatting in the technical content.
6/20/2008	1.3.5	Editorial	Changed language and formatting in the technical content.
7/25/2008	1.3.6	Editorial	Changed language and formatting in the technical content.
8/29/2008	1.3.7	Editorial	Changed language and formatting in the technical content.
10/24/2008	1.3.8	Editorial	Changed language and formatting in the technical content.
12/5/2008	2.0	Major	Updated and revised the technical content.
1/16/2009	2.0.1	Editorial	Changed language and formatting in the technical content.
2/27/2009	2.0.2	Editorial	Changed language and formatting in the technical content.
4/10/2009	2.0.3	Editorial	Changed language and formatting in the technical content.
5/22/2009	3.0	Major	Updated and revised the technical content.
7/2/2009	3.0.1	Editorial	Changed language and formatting in the technical content.
8/14/2009	3.0.2	Editorial	Changed language and formatting in the technical content.
9/25/2009	3.1	Minor	Clarified the meaning of the technical content.
11/6/2009	4.0	Major	Updated and revised the technical content.
12/18/2009	4.0.1	Editorial	Changed language and formatting in the technical content.
1/29/2010	5.0	Major	Updated and revised the technical content.
3/12/2010	5.0.1	Editorial	Changed language and formatting in the technical content.

Date	Revision History	Revision Class	Comments
4/23/2010	6.0	Major	Updated and revised the technical content.
6/4/2010	6.0.1	Editorial	Changed language and formatting in the technical content.
7/16/2010	6.0.1	None	No changes to the meaning, language, or formatting of the technical content.
8/27/2010	6.0.1	None	No changes to the meaning, language, or formatting of the technical content.
10/8/2010	6.0.1	None	No changes to the meaning, language, or formatting of the technical content.
11/19/2010	6.0.1	None	No changes to the meaning, language, or formatting of the technical content.
1/7/2011	6.0.1	None	No changes to the meaning, language, or formatting of the technical content.
2/11/2011	6.0.1	None	No changes to the meaning, language, or formatting of the technical content.
3/25/2011	6.0.1	None	No changes to the meaning, language, or formatting of the technical content.
5/6/2011	6.0.1	None	No changes to the meaning, language, or formatting of the technical content.
6/17/2011	6.1	Minor	Clarified the meaning of the technical content.
9/23/2011	6.1	None	No changes to the meaning, language, or formatting of the technical content.
12/16/2011	7.0	Major	Updated and revised the technical content.
3/30/2012	7.0	None	No changes to the meaning, language, or formatting of the technical content.
7/12/2012	7.0	None	No changes to the meaning, language, or formatting of the technical content.
10/25/2012	7.0	None	No changes to the meaning, language, or formatting of the technical content.
1/31/2013	8.0	Major	Updated and revised the technical content.
8/8/2013	9.0	Major	Updated and revised the technical content.
11/14/2013	9.0	None	No changes to the meaning, language, or formatting of the technical content.
2/13/2014	10.0	Major	Updated and revised the technical content.
5/15/2014	11.0	Major	Updated and revised the technical content.
6/30/2015	12.0	Major	Significantly changed the technical content.
10/16/2015	12.0	None	No changes to the meaning, language, or formatting of the technical content.
7/14/2016	13.0	Major	Significantly changed the technical content.

Date	Revision History	Revision Class	Comments
6/1/2017	14.0	Major	Significantly changed the technical content.
9/15/2017	15.0	Major	Significantly changed the technical content.
12/1/2017	15.0	None	No changes to the meaning, language, or formatting of the technical content.
3/16/2018	16.0	Major	Significantly changed the technical content.
9/12/2018	17.0	Major	Significantly changed the technical content.
10/1/2020	18.0	Major	Significantly changed the technical content.
4/7/2021	19.0	Major	Significantly changed the technical content.

Table of Contents

1	Introduction	6
1.1	(Updated Section) Glossary	6
1.2	References	8
1.2.1	Normative References	8
1.2.2	Informative References	9
1.3	Overview	9
1.4	Relationship to Other Protocols	10
1.5	Prerequisites/Preconditions	10
1.6	Applicability Statement	10
1.7	Versioning and Capability Negotiation	10
1.8	Vendor-Extensible Fields	11
1.9	Standards Assignments	11
2	Messages	12
2.1	Transport	12
2.2	Message Syntax	12
2.2.1	TSRequest	12
2.2.1.1	NegoData	13
2.2.1.2	TSCredentials	13
2.2.1.2.1	TSPasswordCreds	13
2.2.1.2.2	TSSmartCardCreds	14
2.2.1.2.2.1	TSCspDataDetail	14
2.2.1.2.3	TSRemoteGuardCreds	14
2.2.1.2.3.1	TSRemoteGuardPackageCred	15
3	Protocol Details	16
3.1	Common Details	16
3.1.1	Abstract Data Model	16
3.1.2	Timers	16
3.1.3	Initialization	16
3.1.4	Higher-Layer Triggered Events	16
3.1.5	Processing Events and Sequencing Rules	16
3.1.6	Timer Events	18
3.1.7	Other Local Events	18
4	Protocol Examples	19
5	Security	21
5.1	Security Considerations for Implementors	21
5.2	Index of Security Parameters	21
6	(Updated Section) Appendix A: Product Behavior	22
7	Change Tracking	26
8	Index	27

1 Introduction

The Credential Security Support Provider (CredSSP) Protocol enables an application to securely delegate a user's credentials from a client to a target server. This protocol first establishes an encrypted channel between the client and the target server by using Transport Layer Security (TLS) (as specified in [RFC2246]). The CredSSP Protocol uses TLS as an encrypted pipe; it does not rely on the client/server authentication services that are available in TLS. The CredSSP Protocol then uses the protocol extensions described in [MS-SPNG] to negotiate a Generic Security Services (GSS) mechanism that performs mutual authentication and GSS confidentiality services to securely bind to the TLS channel and encrypt the credentials for the target server. All GSS security tokens are sent over the encrypted TLS channel.

Sections 1.5, 1.8, 1.9, 2, and 3 of this specification are normative. All other sections and examples in this specification are informative.

1.1 (Updated Section) Glossary

This document uses the following terms:

application protocol: A network protocol that visibly accomplishes the task that the user or other agent wants to perform. This is distinguished from all manner of support protocols: from Ethernet or IP at the bottom to security and routing protocols. While necessary, these are not always visible to the user. Application protocols include, for instance, HTTP and Server Message Block (SMB).

certification authority (CA): A third party that issues public key certificates. Certificates serve to bind public keys to a user identity. Each user and certification authority (CA) can decide whether to trust another user or CA for a specific purpose, and whether this trust should be transitive. For more information, see [RFC3280].

credential: Previously established, authentication data that is used by a security principal to establish its own identity. When used in reference to the Netlogon Protocol, it is the data that is stored in the NETLOGON_CREDENTIAL structure.

CredSSP client: Any application that executes the role of the client ~~as prescribed by the [MS-CSSP] Protocol described in this document~~ to authenticate the identity of a user at the network layer to the server by using the CredSSP Protocol.

CredSSP server: Any application that executes the role of the server ~~as prescribed to authenticate the identity of a user at the network layer to the server by using the [MS-CSSP] CredSSP Protocol~~ described in this document.

domain: A set of users and computers sharing a common namespace and management infrastructure. At least one computer member of the set must act as a domain controller (DC) and host a member list that identifies all members of the domain, as well as optionally hosting the Active Directory service. The domain controller provides authentication of members, creating a unit of trust for its members. Each domain has an identifier that is shared among its members. For more information, see [MS-AUTHSOD] section 1.1.1.5 and [MS-ADTS].

Generic Security Services (GSS): An Internet standard, as described in [RFC2743], for providing security services to applications. It consists of an application programming interface (GSS-API) set, as well as standards that describe the structure of the security data.

Kerberos: An authentication system that enables two parties to exchange private information across an otherwise open network by assigning a unique key (called a ticket) to each user that logs on to the network and then embedding these tickets into messages sent by the users. For more information, see [MS-KILE].

man in the middle (MITM): An attack that deceives a server or client into accepting an unauthorized upstream host as the actual legitimate host. Instead, the upstream host is an attacker's host that is manipulating the network so that the attacker's host appears to be the desired destination. This enables the attacker to decrypt and access all network traffic that would go to the legitimate host. The attacker is able to read, insert, and modify at-will messages between two hosts without either party knowing that the link between them is compromised.

mutual authentication: A mode in which each party verifies the identity of the other party, as described in [RFC3748] section 7.2.1.

NT LAN Manager (NTLM) Authentication Protocol: A protocol using a challenge-response mechanism for authentication in which clients are able to verify their identities without sending a password to the server. It consists of three messages, commonly referred to as Type 1 (negotiation), Type 2 (challenge) and Type 3 (authentication).

OCTET STRING: An ASN.1 variable-length sequence of 8-bit values to which a variety of data types and formats can be encoded for transmission. The encoding rules follow Basic Encoding Rules (BER), and optional Canonical Encoding Rules (CER) or Distinguished Encoding Rules (DER) restrictions on BER. Values have 2 possible forms: binary or hexadecimal. The representation in octets of values of identifiers, lengths, and contents of integers shown in hexadecimal have two hexadecimal digits per octet. The values of the contents of character strings shown in hexadecimal have one character per octet.

public key infrastructure (PKI): The laws, policies, standards, and software that regulate or manipulate certificates and public and private keys. In practice, it is a system of digital certificates, certificate authorities (CAs), and other registration authorities that verify and authenticate the validity of each party involved in an electronic transaction. For more information, see [X509] section 6.

security protocol: A protocol that performs authentication and possibly additional security services on a network.

service principal name (SPN): The name a client uses to identify a service for mutual authentication. (For more information, see [RFC1964] section 2.1.1.) An SPN consists of either two parts or three parts, each separated by a forward slash ('/'). The first part is the service class, the second part is the host name, and the third part (if present) is the service name. For example, "ldap/dc-01.fabrikam.com/fabrikam.com" is a three-part SPN where "ldap" is the service class name, "dc-01.fabrikam.com" is the host name, and "fabrikam.com" is the service name. See [SPNAMES] for more information about SPN format and composing a unique SPN.

Simple and Protected GSS-API Negotiation Mechanism (SPNEGO): An authentication mechanism that allows Generic Security Services (GSS) peers to determine whether their credentials support a common set of GSS-API security mechanisms, to negotiate different options within a given security mechanism or different options from several security mechanisms, to select a service, and to establish a security context among themselves using that service. SPNEGO is specified in [RFC4178].

Transport Layer Security (TLS): A security protocol that supports confidentiality and integrity of messages in client and server applications communicating over open networks. TLS supports server and, optionally, client authentication by using X.509 certificates (as specified in [X509]). TLS is standardized in the IETF TLS working group.

trust: To accept another authority's statements for the purposes of authentication and authorization, especially in the case of a relationship between two domains. If domain A trusts domain B, domain A accepts domain B's authentication and authorization statements for principals represented by security principal objects in domain B; for example, the list of groups to which a particular user belongs. As a noun, a trust is the relationship between two domains described in the previous sentence.

Unicode string: A Unicode 8-bit string is an ordered sequence of 8-bit units, a Unicode 16-bit string is an ordered sequence of 16-bit code units, and a Unicode 32-bit string is an ordered sequence of 32-bit code units. In some cases, it could be acceptable not to terminate with a terminating null character. Unless otherwise specified, all Unicode strings follow the UTF-16LE encoding scheme with no Byte Order Mark (BOM).

MAY, SHOULD, MUST, SHOULD NOT, MUST NOT: These terms (in all caps) are used as defined in [RFC2119]. All statements of optional behavior use either MAY, SHOULD, or SHOULD NOT.

1.2 References

Links to a document in the Microsoft Open Specifications library point to the correct section in the most recently published version of the referenced document. However, because individual documents in the library are not updated at the same time, the section numbers in the documents may not match. You can confirm the correct section numbering by checking the Errata.

1.2.1 Normative References

We conduct frequent surveys of the normative references to assure their continued availability. If you have any issue with finding a normative reference, please contact dochelp@microsoft.com. We will assist you in finding the relevant information.

[MS-ERREF] Microsoft Corporation, "Windows Error Codes".

[MS-KILE] Microsoft Corporation, "Kerberos Protocol Extensions".

[MS-NLMP] Microsoft Corporation, "NT LAN Manager (NTLM) Authentication Protocol".

[MS-RDPEAR] Microsoft Corporation, "Remote Desktop Protocol Authentication Redirection Virtual Channel".

[MS-SPNG] Microsoft Corporation, "Simple and Protected GSS-API Negotiation Mechanism (SPNEGO) Extension".

[RFC2078] Linn, J., "Generic Security Service Application Program Interface, Version 2", RFC 2078, January 1997, <http://www.ietf.org/rfc/rfc2078.txt>

[RFC2119] Bradner, S., "Key words for use in RFCs to Indicate Requirement Levels", BCP 14, RFC 2119, March 1997, <http://www.rfc-editor.org/rfc/rfc2119.txt>

[RFC2246] Dierks, T., and Allen, C., "The TLS Protocol Version 1.0", RFC 2246, January 1999, <http://www.rfc-editor.org/rfc/rfc2246.txt>

[RFC3280] Housley, R., Polk, W., Ford, W., and Solo, D., "Internet X.509 Public Key Infrastructure Certificate and Certificate Revocation List (CRL) Profile", RFC 3280, April 2002, <http://www.ietf.org/rfc/rfc3280.txt>

[RFC4120] Neuman, C., Yu, T., Hartman, S., and Raeburn, K., "The Kerberos Network Authentication Service (V5)", RFC 4120, July 2005, <https://www.rfc-editor.org/rfc/rfc4120.txt>

[RFC4178] Zhu, L., Leach, P., Jaganathan, K., and Ingersoll, W., "The Simple and Protected Generic Security Service Application Program Interface (GSS-API) Negotiation Mechanism", RFC 4178, October 2005, <https://www.rfc-editor.org/rfc/rfc4178.txt>

[RFC793] Postel, J., Ed., "Transmission Control Protocol: DARPA Internet Program Protocol Specification", RFC 793, September 1981, <http://www.rfc-editor.org/rfc/rfc793.txt>

[X690] ITU-T, "Information Technology - ASN.1 Encoding Rules: Specification of Basic Encoding Rules (BER), Canonical Encoding Rules (CER) and Distinguished Encoding Rules (DER)", Recommendation X.690, July 2002, <http://www.itu.int/rec/T-REC-X.690/en>

1.2.2 Informative References

[KERB-TICKET-LOGON] Microsoft Corporation, "KERB_TICKET_LOGON structure", [https://msdn.microsoft.com/en-us/library/windows/desktop/aa378143\(v=vs.85\).aspx](https://msdn.microsoft.com/en-us/library/windows/desktop/aa378143(v=vs.85).aspx)

[MS-DTYP] Microsoft Corporation, "Windows Data Types".

[MSDOCS-UNICODE_STRING] Microsoft Corporation, "UNICODE_STRING structure", https://docs.microsoft.com/en-us/windows/win32/api/ntdef/ns-ntdef-_unicode_string

[MSKB-4088776] Microsoft Corporation, "March 13, 2018 - KB4088776", <http://www.catalog.update.microsoft.com/Search.aspx?q=4088776>

1.3 Overview

The Credential Security Support Provider (CredSSP) Protocol enables an application to securely delegate a user's credentials from a client to a target server. For example, the Microsoft Terminal Server uses the CredSSP Protocol to securely delegate the user's password or smart card PIN from the client to the server to remotely log on the user and establish a terminal services session.

Policy settings control whether a client delegates the user's credentials in order to assure that the user's credentials are not delegated to an unauthorized server (a computer under the administrative control of an attacker). Although trust might exist to facilitate authentication between the client and server, it does not mean that the target server is trusted with the user's credentials. For example, trust might be based on the Kerberos Protocol [RFC4120] or NTLM [MS-NLMP].

The CredSSP Protocol is a composite protocol that relies on other standards-based security protocols. It first uses the Transport Layer Security (TLS) Protocol to establish an encrypted channel between the CredSSP client and the CredSSP server. (The client is anonymous at this point; the client and the server might have no common trusted certification authority (CA) root.)

All subsequent messages are sent over this channel. The CredSSP Protocol then uses the Simple and Protected Generic Security Service Application Program Interface Negotiation Mechanism (SPNEGO) to authenticate the user and server in the encrypted TLS session. (SPNEGO is specified in [MS-SPNG].)

SPNEGO provides a framework for two parties that are engaged in authentication to select from a set of possible authentication mechanisms. This framework provides selection in a manner that preserves the opaque nature of the security protocols to the application protocol that uses SPNEGO. In this case, the CredSSP Protocol is the application protocol that uses SPNEGO.

The CredSSP Protocol uses SPNEGO to mutually authenticate the CredSSP client and CredSSP server. It then uses the encryption key that is established under SPNEGO to securely bind to the TLS session (the process by which the server's public key that is used in the TLS handshake is authenticated). The client encrypts a hash of the server's public key by using the encryption key that is established under SPNEGO and sends it to the server. The server verifies that it is the same public key that was used in the TLS handshake and sends an acknowledgment (also encrypted under the SPNEGO encryption key) back to the client. (For more information about this step, see section 3.1.1.) Lastly, the client sends the user's credentials, which are encrypted under the SPNEGO encryption key, to the server.

All subsequent data that is sent between the client and server application by using the CredSSP Protocol is encrypted under TLS. The only new on-the-wire formats that are introduced by the CredSSP Protocol are the encapsulation of the SPNEGO tokens sent over the TLS channel, the binding between the TLS and SPNEGO protocols, and the format of the user credentials.

1.4 Relationship to Other Protocols

The CredSSP Protocol uses the TLS Protocol, as specified in [RFC2246], to encrypt all traffic between the CredSSP client and the CredSSP server. The TLS Protocol requires a reliable transport, such as TCP (as specified in [RFC793]), for all messages that are exchanged between the client and the server.

The CredSSP Protocol typically uses SPNEGO [MS-SPNG] for mutual authentication between the CredSSP client and CredSSP server and can use Kerberos [MS-KILE] and NTLM [MS-NLMP]. SPNEGO requires that at least one other authentication protocol be present that is compatible with Generic Security Services (GSS) [RFC2078] (in addition to SPNEGO itself); otherwise, SPNEGO will not work. SPNEGO has no dependence on any specific GSS-compatible protocols; however, the Kerberos Protocol [MS-KILE] is typically used.<1>

The Remote Desktop Protocol (RDP) uses the CredSSP Protocol to delegate credentials from the RDP client to the RDP server and to encrypt all data that follows by using the TLS channel that is established as part of the CredSSP Protocol.

1.5 Prerequisites/Preconditions

The CredSSP Protocol assumes the following:

- The CredSSP client has access to the user's credentials (the CredSSP Protocol delegates these credentials to the CredSSP server).<2>
- A source of cryptographically useful random numbers MUST be available on the client and server for generating a nonce that is used by the TLS Protocol as well as the client/server identity validation.
- The CredSSP server has an X.509 certificate (as specified in [RFC3280]) for use in TLS. The certificate can be self-signed or issued by a third-party certification authority. The CredSSP Protocol does not assume a common certification authority root between the client and the server.
- The CredSSP Protocol uses the SPNEGO protocol for mutual client/server authentication; at least one other GSS-compatible authentication protocol, in addition to the CredSSP Protocol, MUST be present for it to work.<3>

1.6 Applicability Statement

The CredSSP protocol delegates the user's credentials from a client to a server over a mutually authenticated encrypted channel. To avoid revealing the user credentials to unauthorized hosts, the CredSSP client delegates only to trusted servers, as expressed through the security policy that governs the client's computer. The CredSSP protocol was designed to enable the server to impersonate the client across a number of different applications that require the user's long-lived credentials (password).

1.7 Versioning and Capability Negotiation

Versioning and capability negotiation are supported in the CredSSP Protocol as follows:

- Protocol versions: The CredSSP Protocol supports versioning (the version field of the TSRequest structure, section 2.2.1).
- Security and authentication methods: The CredSSP Protocol uses the SPNEGO protocol to negotiate the underlying authentication mechanism. Similarly, the CredSSP Protocol relies on the TLS Protocol to negotiate the cryptographic algorithms that are used for channel confidentiality and integrity.

- Localization: The CredSSP Protocol is not localization dependent.

1.8 Vendor-Extensible Fields

The CredSSP Protocol does not have any vendor-extensible fields.

1.9 Standards Assignments

The CredSSP Protocol does not have any standards assignments. Standards assignments for the Simple and Protected GSS-API Negotiation Mechanism (SPNEGO), Kerberos, NTLM, and TLS Protocols are specified in [MS-SPNG] section 1.9, [MS-KILE] section 1.9, [MS-NLMP] section 1.9, and [RFC2246] section G, respectively.

2 Messages

2.1 Transport

Because the CredSSP Protocol uses TLS, all messages exchanged between the client and server SHOULD be transmitted over a reliable transport protocol, such as TCP (as specified in [RFC793]).

2.2 Message Syntax

The CredSSP Protocol introduces the **TSRequest** message, section 2.2.1. The client and server use this message to encapsulate the SPNEGO tokens and **TSCredentials** message, section 2.2.1.2, that the client SHOULD use to delegate the user's credentials to the CredSSP server over a TLS connection. These messages are encoded by using ASN.1 (as specified in [X690]) and Distinguished Encoding Rules (DER).

2.2.1 TSRequest

The **TSRequest** structure is the top-most structure used by the CredSSP client and CredSSP server. It contains the SPNEGO tokens and MAY contain Kerberos/NTLM messages that are passed between the client and server, and either the public key authentication messages that are used to bind to the TLS session or the client credentials that are delegated to the server. The **TSRequest** message is always sent over the TLS-encrypted channel between the client and server in a CredSSP Protocol exchange (see step 1 in section 3.1.5).

```
TSRequest ::= SEQUENCE {
    version      [0] INTEGER,
    negoTokens  [1] NegoData OPTIONAL,
    authInfo    [2] OCTET STRING OPTIONAL,
    pubKeyAuth  [3] OCTET STRING OPTIONAL,
    errorCode   [4] INTEGER OPTIONAL,
    clientNonce [5] OCTET STRING OPTIONAL
}
```

version: An unsigned integer encoded as an ASN.1 INTEGER that specifies the supported version of the CredSSP Protocol. Valid values for this field are 2, 3, 4, 5, and 6. If the version received is greater than the implementation understands, treat the peer as one that is compatible with the version of the CredSSP Protocol that the implementation understands.

negoTokens: A **NegoData** structure, as defined in section 2.2.1.1, that contains the SPNEGO tokens or Kerberos/NTLM messages that are passed between the client and server.

authInfo: A **TSCredentials** structure, as defined in section 2.2.1.2, encoded as an ASN.1 OCTET STRING that contains the user's credentials that are delegated to the server. The **authInfo** field MUST be encrypted under the encryption key that is negotiated under the SPNEGO package. The **authInfo** field carries the message signature and then the encrypted data.

pubKeyAuth: An encrypted public key encoded as an ASN.1 OCTET STRING. This field is used to assure that the public key that is used by the server during the TLS handshake belongs to the target server and not to a man-in-the-middle. This TLS session-binding is specified in section 3.1.5. After the client completes the SPNEGO phase of the CredSSP Protocol, it uses **GSS_WrapEx()** for the negotiated protocol to encrypt the server's public key. With version 4 or lower, the **pubKeyAuth** field carries the message signature and then the encrypted public key to the server. In response, the server uses the **pubKeyAuth** field to transmit to the client a modified version of the public key (as specified in section 3.1.5) that is encrypted under the encryption key that is negotiated under SPNEGO. In version 5 or higher, this field stores a computed hash of the public key.

errorCode: A 32-bit value encoded as an ASN.1 INTEGER. If the negotiated protocol version is 3, 4, or 6, and the SPNEGO exchange fails on the server, this field SHOULD<12> be used to send the NTSTATUS failure code ([MS-ERREF] section 2.3) to the client so that it knows what failed and be able to display a descriptive error to the user.

clientNonce: A 32-byte array of cryptographically random bytes encoded as an ASN.1 OCTET STRING used to provide sufficient entropy during hash computation. This value is only used in version 5 or higher of this protocol.

2.2.1.1 NegoData

The **NegoData** structure contains the SPNEGO tokens ([MS-SPNG] section 2), the Kerberos messages ([MS-KILE] section 2), or the NTLM messages ([MS-NLMP] section 2).<13>

```
NegoData ::= SEQUENCE OF SEQUENCE {  
    negoToken [0] OCTET STRING  
}
```

negoToken: An ASN.1 OCTET STRING that contains one or more SPNEGO tokens and all Kerberos or NTLM messages, as negotiated by SPNEGO.

2.2.1.2 TSCredentials

The **TSCredentials** structure contains both the user's credentials that are delegated to the server and their type.<14>

```
TSCredentials ::= SEQUENCE {  
    credType [0] INTEGER,  
    credentials [1] OCTET STRING  
}
```

credType: An unsigned integer encoded as an ASN.1 INTEGER that defines the type of credentials that are carried in the **credentials** field. The **credType** field MUST be one of the following values.

Value	Meaning
1	credentials contains a TSPasswordCreds structure (section 2.2.1.2.1) that defines the user's password credentials.
2	credentials contains a TSSmartCardCreds structure (section 2.2.1.2.2) that defines the user's smart card credentials.
6	credentials contains a TSRemoteGuardCreds structure (section 2.2.1.2.3) that defines the user's redirected credentials.

credentials: An ASN.1 OCTET STRING that contains the user's password, smart card credentials, or Remote Credential Guard credentials in a TSPasswordCreds structure, a TSSmartCardCreds structure, or a TSRemoteGuardCreds structure, respectively.

2.2.1.2.1 TSPasswordCreds

The **TSPasswordCreds** structure contains the user's password credentials that are delegated to the server.<15>

```
TSPasswordCreds ::= SEQUENCE {  
    domainName [0] OCTET STRING,
```

```

        userName    [1] OCTET STRING,
        password    [2] OCTET STRING
    }

```

domainName: An ASN.1 OCTET STRING that contains the name of the user's account domain.

userName: An ASN.1 OCTET STRING that contains the user's account name.

password: An ASN.1 OCTET STRING that contains the user's account password.

2.2.1.2.2 TSSmartCardCreds

The **TSSmartCardCreds** structure contains the user's smart card credentials that are delegated to the server.<16>

```

TSSmartCardCreds ::= SEQUENCE {
    pin            [0] OCTET STRING,
    cspData       [1] TSCspDataDetail,
    userHint      [2] OCTET STRING OPTIONAL,
    domainHint    [3] OCTET STRING OPTIONAL
}

```

pin: An ASN.1 OCTET STRING that contains the user's smart card PIN.

cspData: A **TSCspDataDetail** structure, section 2.2.1.2.2.1 that contains information about the cryptographic service provider (CSP).

userHint: An ASN.1 OCTET STRING that contains the user's account hint.

domainHint: An ASN.1 OCTET STRING that contains the user's domain name to which the user's account belongs. This name could be entered by the user when the user is first prompted for the PIN.

2.2.1.2.2.1 TSCspDataDetail

The **TSCspDataDetail** structure contains CSP information used during smart card logon.<17>

```

TSCspDataDetail ::= SEQUENCE {
    keySpec       [0] INTEGER,
    cardName      [1] OCTET STRING OPTIONAL,
    readerName    [2] OCTET STRING OPTIONAL,
    containerName [3] OCTET STRING OPTIONAL,
    cspName       [4] OCTET STRING OPTIONAL
}

```

keySpec: An unsigned integer encoded as an ASN.1 INTEGER that defines the specification of the user's smart card.

cardName: An ASN.1 OCTET STRING that specifies the name of the smart card.

readerName: An ASN.1 OCTET STRING that specifies the name of the smart card reader.

containerName: An ASN.1 OCTET STRING that specifies the name of the certificate container.

cspName: An ASN.1 OCTET STRING that specifies the name of the CSP.

2.2.1.2.3 TSRemoteGuardCreds

The **TSRemoteGuardCreds** structure SHOULD<18> contain a logon credential and supplemental credentials provided by security packages. The format of the individual credentials depends on the package that provided them.<19> The logon credential is passed to the **Negotiate** package, which in turn passes the credential to the default authentication package.

```
TSRemoteGuardCreds ::= SEQUENCE{
    logonCred          [0] TSRemoteGuardPackageCred,
    supplementalCreds  [1] SEQUENCE OF TSRemoteGuardPackageCred OPTIONAL,
}
```

logonCred: A **TSRemoteGuardPackageCred** structure, section 2.2.1.2.3.1, that contains a logon credential for the user.

supplementalCreds: An ASN.1 SEQUENCE OF type that contains an array of **TSRemoteGuardPackageCred** structures that contains supplemental credentials for other security packages.

2.2.1.2.3.1 TSRemoteGuardPackageCred

The **TSRemoteGuardPackageCred** structure contains credentials for a specific security package.<20>

```
TSRemoteGuardPackageCred ::= SEQUENCE{
    packageName [0] OCTET STRING,
    credBuffer  [1] OCTET STRING,
}
```

packageName: An ASN.1 OCTET STRING that contains the name of the package for which these credentials are intended.<21>

credBuffer: An ASN.1 OCTET STRING byte buffer that contains the credentials in a format that SHOULD<22> be specified by the CredSSP server operating system for the package that provided them.

3 Protocol Details

3.1 Common Details

3.1.1 Abstract Data Model

This section describes a conceptual model of possible data organization that an implementation maintains to participate in this protocol. The described organization is provided to facilitate the explanation of how the protocol behaves. This document does not mandate that implementations adhere to this model as long as their external behavior is consistent with that described in this document.

The CredSSP Protocol SHOULD<23> require the client to perform a policy check to verify that the target server is trusted to receive the user's credentials.

3.1.2 Timers

None.

3.1.3 Initialization

There are no changes to the initialization of TLS, Kerberos, NTLM, and SPNEGO, as specified in [RFC2246], [MS-KILE], [MS-NLMP], and [MS-SPNG], respectively.

3.1.4 Higher-Layer Triggered Events

The CredSSP Protocol is triggered by a higher-layer application protocol, such as RDP, for delegating the user's credentials to the target server.

3.1.5 Processing Events and Sequencing Rules

The CredSSP Protocol is carried out in the following sequence and is subject to the protocol rules that are described in the following steps:

1. The CredSSP client and CredSSP server first complete the TLS handshake, as specified in [RFC2246]. After the handshake is complete, all subsequent CredSSP Protocol messages are encrypted by the TLS channel. The CredSSP Protocol does not extend the TLS wire protocol. TLS session resumption is not supported. As part of the TLS handshake, the CredSSP server does not request the client's X.509 certificate (thus far, the client is anonymous). Also, the CredSSP Protocol does not require the client to have a commonly trusted certification authority root with the CredSSP server. Thus, the CredSSP server SHOULD<24> use an X.509 certificate that is either based on a commonly trusted certificate authority (CA) root or on a self-signed X.509 certificate.
2. Over the encrypted TLS channel, the SPNEGO, Kerberos, or NTLM handshake between the client and server completes authentication and establishes an encryption key that is used by the SPNEGO confidentiality services, as specified in [RFC4178]. All SPNEGO tokens or Kerberos/NTLM messages as well as the underlying encryption algorithms are opaque to the calling application (the CredSSP client and CredSSP server). The wire protocol for SPNEGO, Kerberos, and NTLM is specified in [MS-SPNG], [MS-KILE], and [MS-NLMP], respectively.

The SPNEGO tokens or Kerberos/NTLM messages exchanged between the client and the server are encapsulated in the **negoTokens** field of the TSRequest structure (section 2.2.1). Both the client and the server use this structure as many times as necessary to complete the authentication exchange. The Kerberos or NTLM authentication package is negotiated by SPNEGO. Therefore, the

encryption key that is established under SPNEGO is either a Kerberos subsession key or an NTLM session key that is shared by both sides upon completion of the SPNEGO exchange.

Note During this phase of the protocol, the OPTIONAL **authInfo** field is omitted from the TSRequest structure by the client and server; the OPTIONAL **pubKeyAuth** field is omitted by the client unless the client is sending the last SPNEGO token or Kerberos/NTLM message. If the client is sending the last SPNEGO token or Kerberos/NTLM message, the TSRequest structure MUST have both the **negoTokens** and the **pubKeyAuth** fields filled in.

Note If the SPNEGO handshake fails on the server side and the client sent a version of 3 or greater, the server SHOULD send a TSRequest structure back to the client for which the **errorCode** field is populated with an unsuccessful NTSTATUS code ([MS-ERREF] section 2.3). The NTSTATUS code indicates the reason for the failure to the client. If the client receives a TSRequest message with the **errorCode** present, it must immediately fail with the provided status code and cease all further processing.

3. This step is version-dependent as follows:

Version 5 or 6

The client SHOULD generate a cryptographically random 32-byte value and set the nonce field of the TSRequest structure to this value. It then computes a SHA256 hash of the ASN.1 encoded SubjectPublicKey concatenated with the bytes of the well-known string "CredSSP Client-To-Server Binding Hash" and the generated nonce. The hash is then encrypted using the confidentiality support of the authentication protocol.

The process is defined as:

```
Set ClientServerHashMagic to "CredSSP Client-To-Server Binding Hash"  
Set ClientServerHash to SHA256(ClientServerHashMagic, Nonce, SubjectPublicKey)  
Set TSRequest.pubKeyAuth to Encrypt(ClientServerHash)
```

Note The hash MUST include the null terminator (\0) of the string.

Version 2, 3, 4:

The client encrypts the public key it received from the server (contained in the X.509 certificate) in the TLS handshake from step 1, by using the confidentiality support of the authentication protocol. The public key that is encrypted is the ASN.1-encoded SubjectPublicKey sub-field of SubjectPublicKeyInfo from the X.509 certificate, as specified in [RFC3280] section 4.1.

All Versions:

The encrypted key is encapsulated in the **pubKeyAuth** field of the TSRequest structure and is sent over the TLS channel to the server.

Note During this phase of the protocol, the OPTIONAL **authInfo** field is omitted from the TSRequest structure; the client MUST send its last SPNEGO token or Kerberos/NTLM message to the server in the **negoTokens** field (see step 2) along with the encrypted public key in the **pubKeyAuth** field.

4. This step is version-dependent as follows:

Version 5 and 6

After the server receives the **TSRequest** structure from step 3, it verifies the hash by computing the hash using the **Nonce** field from the request and the ASN.1-encoded public key used as part of the TLS handshake in step 1. If the hash matches, the server generates its own SHA256 hash of the **SubjectPublicKey** concatenated with the bytes of the well-known string "CredSSP Server-

To-Client Binding Hash" and the provided nonce, and encrypts the binary result using the authentication protocol's encryption services.

The process is defined as:

```
Set ServerClientHashMagic to "CredSSP Server-To-Client Binding Hash"  
Set ServerClientHash to SHA256(ServerClientHashMagic, Nonce, SubjectPublicKey)  
Set TSRequest.pubKeyAuth to Encrypt(ServerClientHash)
```

Note The hash MUST include the null terminator (\0) of the string.

Version 2, 3, and 4

After the server receives the public key in step 3, it first verifies that it has the same public key that it used as part of the TLS handshake in step 1. The server then adds 1 to the first byte representing the public key (the ASN.1 structure corresponding to the **SubjectPublicKey** field, as described in step 3) and encrypts the binary result by using the authentication protocol's encryption services. Due to the addition of 1 to the binary data, and encryption of the data as a binary structure, the resulting value might not be valid ASN.1-encoded values. The addition of 1 to the first byte of the public key is performed so that the client-generated **pubKeyAuth** message cannot be replayed back to the client by an attacker.

All versions:

The encrypted binary data is encapsulated in the **pubKeyAuth** field of the TSRequest structure and is sent over the encrypted TLS channel to the client.

Note The server SHOULD set the errorCode to **STATUS_NOT_SUPPORTED** if the server does not support the requested version.

Note During this phase of the protocol, the OPTIONAL **authInfo** and **negoTokens** fields are omitted from the TSRequest structure.

5. The client validates the server authenticity by generating and comparing the server hash if using version 5, or higher. Otherwise, it performs a binary comparison of the data from step 4 to that of the data representing the public key from the server's X.509 certificate (as specified in [RFC3280], section 4.1). Once it successfully validates the server authenticity, it encrypts the user's credentials (either password or smart card PIN) by using the authentication protocol's encryption services. The resulting value is encapsulated in the **authInfo** field of the TSRequest structure and sent over the encrypted TLS channel to the server.

The TSCredentials structure within the **authInfo** field of the TSRequest structure MUST NOT contain more than one of the following structures: TSPasswordCreds, TSSmartCardCreds, or TSRemoteGuardCreds structures.

Note During this phase of the protocol, the OPTIONAL **pubKeyAuth** and **negoTokens** fields are omitted from the TSRequest structure.

Note If the credentials were of type TSRemoteGuardCreds, the TLS channel continues to be used for redirected authentication requests, as specified in [MS-RDPEAR].

3.1.6 Timer Events

There are no timer events for the CredSSP Protocol.

3.1.7 Other Local Events

There are no other local events that impact the operation of this protocol.

4 Protocol Examples

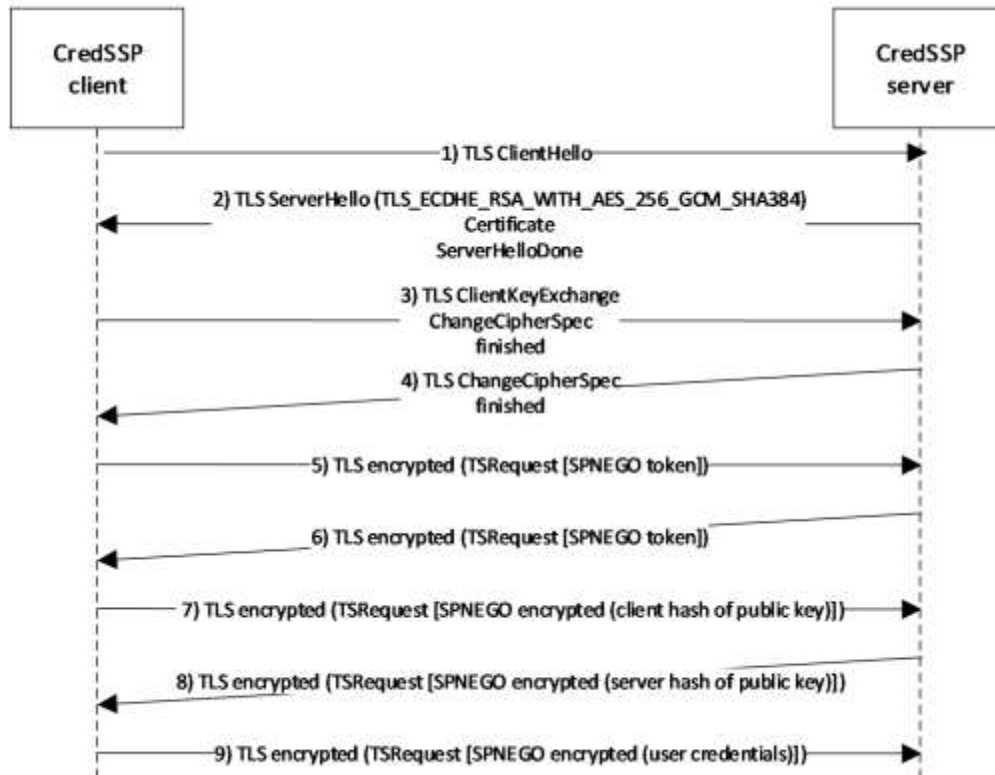


Figure 1: CredSSP negotiation sequence using SPNEGO

Steps 1 through 4: The CredSSP client and CredSSP server complete the TLS handshake. When the handshake is complete, all subsequent CredSSP Protocol messages are encrypted by the TLS channel, as specified in [RFC2246]. As part of the TLS handshake, the CredSSP server does not request the client's X.509 certificate (thus far, the client is anonymous). Furthermore, the CredSSP Protocol does not require the client to have a commonly trusted certification authority root with the CredSSP server.

Steps 5 and 6: Over the encrypted TLS channel, the SPNEGO handshake between the client and server completes mutual authentication and establishes an encryption key.

Steps 7 and 8: The public key from the server's X.509 certificate in the TLS handshake is verified that it belongs to the server (and not to a man-in-the-middle attacker).

Step 9: The client sends its credentials to the target server that is protected under SPNEGO and TLS encryption. A sample of an unencrypted (ASN.1DER encoded) **TSRequest.authInfo** structure follows. This is encrypted on the wire.

```

30 82 01 0f a0 03 02 01-02 a1 82 01 06 04 82 01 0.....
02 30 81 ff a0 1a 04 18-62 00 62 00 62 00 62 00 .0.....b.b.b.b.
62 00 62 00 62 00 62 00-62 00 62 00 62 00 62 00 b.b.b.b.b.b.b.b.
a1 81 e0 30 81 dd a0 03-02 01 01 a2 2e 04 2c 4f ...0.....,0
00 4d 00 4e 00 49 00 4b-00 45 00 59 00 20 00 43 .M.N.I.K.E.Y. .C
00 61 00 72 00 64 00 4d-00 61 00 6e 00 20 00 33 .a.r.d.M.a.n. .3
00 78 00 32 00 31 00 20-00 30 00 a3 50 04 4e 6c .x.2.1. .0..P.N1
00 65 00 2d 00 4d 00 53-00 53 00 6d 00 61 00 72 .e.-.M.S.S.m.a.r
00 74 00 63 00 61 00 72-00 64 00 55 00 73 00 65 .t.c.a.r.d.U.s.e
00 72 00 2d 00 38 00 62-00 64 00 61 00 30 00 31 .r.-.8.b.d.a.0.1
  
```

```

00 39 00 66 00 2d 00 31-00 32 00 36 00 36 00 2d .9.f.-.1.2.6.6.-
00 2d 00 35 00 33 00 32-00 36 00 38 00 a4 54 04 .-.5.3.2.6.8..T.
52 4d 00 69 00 63 00 72-00 6f 00 73 00 6f 00 66 RM.i.c.r.o.s.o.f
00 74 00 20 00 42 00 61-00 73 00 65 00 20 00 53 .t. .B.a.s.e. .S
00 6d 00 61 00 72 00 74-00 20 00 43 00 61 00 72 .m.a.r.t. .C.a.r
00 64 00 20 00 43 00 72-00 79 00 70 00 74 00 6f .d. .C.r.y.p.t.o
00 20 00 50 00 72 00 6f-00 76 00 69 00 64 00 65 . .P.r.o.v.i.d.e
00 72 00

```

The transformed **TSRequest.authinfo** structure is as follows:

```

Total Size: 275
-----
      TSCredentials -----
      tscredentials_len: 0X10F=271
      credType: 0X2=2
      creds_len: 0X106=262

      TSSmartCardCreds -----
      pin: [bbbbbbbbbbbb]
      csp_len: 0XE0=224

      TSCspDataDetail -----
      keySpec: 0X1=1
      cardName not present
      readerName: [OMNIKEY CardMan 3x21 0]
      containerName: [le-MSSmartcardUser-8bda019f-1266--53268]
      cspName: [Microsoft Base Smart Card Crypto Provider]

      TSSmartCardCreds ctd -----
      userHint not present
      domainHint not present
Bytes Remaining: 275-275=0

```

5 Security

5.1 Security Considerations for Implementors

The purpose of the CredSSP Protocol is to delegate a user's clear text password or pin from the CredSSP client to a CredSSP server, and it is important to make certain that the server receiving the credentials does not fall under an attacker's control. Although trust can be facilitated via public key infrastructure (PKI), the Kerberos protocol, or NTLM, this does not mean that the target server is trusted with the user's credentials, and additional policy settings should be considered.

Additional policy settings can include defining the servers that are trusted with the user's credentials, the security strength of the authentication mechanisms allowed to be negotiated under SPNEGO [MS-SPNG], and the allowed methods by which the CredSSP client can obtain the user's credentials.

A major revision has been applied to the protocol in version 5 for improved security. Implementors are advised to support version 5 or higher only.

5.2 Index of Security Parameters

There are no security parameters in the CredSSP Protocol.

6 (Updated Section) Appendix A: Product Behavior

The information in this specification is applicable to the following Microsoft products or supplemental software. References to product versions include updates to those products.

The terms "earlier" and "later", when used with a product version, refer to either all preceding versions or all subsequent versions, respectively. The term "through" refers to the inclusive range of versions. Applicable Microsoft products are listed chronologically in this section.

- Windows XP operating system Service Pack 3 (SP3)
- Windows Vista operating system
- Windows Server 2008 operating system
- Windows 7 operating system
- Windows Server 2008 R2 operating system
- Windows 8 operating system
- Windows Server 2012 operating system
- Windows 8.1 operating system
- Windows Server 2012 R2 operating system
- Windows 10 operating system
- Windows Server 2016 operating system
- Windows Server operating system
- Windows Server 2019 operating system
- Windows Server 2022 operating system

Exceptions, if any, are noted in this section. If an update version, service pack or Knowledge Base (KB) number appears with a product name, the behavior changed in that update. The new behavior also applies to subsequent updates unless otherwise specified. If a product edition appears with the product version, behavior is different in that product edition.

Unless otherwise specified, any statement of optional behavior in this specification that is prescribed using the terms "SHOULD" or "SHOULD NOT" implies product behavior in accordance with the SHOULD or SHOULD NOT prescription. Unless otherwise specified, the term "MAY" implies that the product does not follow the prescription.

<1> Section 1.4: By default, SPNEGO has the Kerberos Protocol and NTLM ([MS-NLMP]) available. With the exception of Windows XP SP3, the interface for authentication protocols is open and extensible.

<2> Section 1.5: In Windows, the CredSSP client first checks whether the user's credentials were passed in by the calling application. If so, these credentials are used by the client. If no credentials were passed in by the calling application, the CredSSP Protocol uses credentials that are stored locally in the credentials manager that is associated with the target server. If no credentials are available for the target server, the CredSSP client uses the user's default credentials, which are entered when the user first logs on to the operating system.

<3> Section 1.5: In Windows, the SPNEGO client negotiates Kerberos or NTLM. The Kerberos Protocol is always preferred over NTLM. NTLM is negotiated only if one or both parties do not support the Kerberos Protocol, as specified in [MS-NLMP] section 1.5 and in [MS-KILE].

<4> Section 2.1: The Windows component that implements the CredSSP Protocol is transport-independent—it simply returns opaque CredSSP data back to the calling application. It is up to the calling application to send this CredSSP Protocol data over a reliable transport to its CredSSP Protocol peer.

<5> Section 2.2: The CredSSP server is not supported on Windows XP SP3.

<6> Section 2.2: Where data is a text string, Windows uses a Unicode string defined by a **UNICODE_STRING** structure to encode to ASN.1 OCTET STRING format. For more information see [MSDOCS-UNICODE_STRING]. For a description of Octet String see [MS-DTYP] and [X690].

<7> Section 2.2.1: Windows CredSSP clients never send Kerberos.

<8> Section 2.2.1: The CredSSP standard requires that a TLS encrypted message fragment contain an entire ASN.1 message. CredSSP expects the entire first tag and length to fall in the initial block of decrypted data and for the client to encrypt **TSRequest** messages as single blocks subject only to fragmentation at TLS's maximum message length. The CredSSP server expects a TLS encryption of an entire **TSRequest** message without fragmentation. Otherwise, the server returns an error.

<9> Section 2.2.1: Where data is a text string, Windows uses a Unicode string defined by a **UNICODE_STRING** structure to encode to ASN.1 OCTET STRING format. For more information see [MSDOCS-UNICODE_STRING]. For a description of Octet String see [MS-DTYP] and [X690].

<10> Section 2.2.1: In Windows XP SP3, Windows Vista, Windows Server 2008, Windows 7, Windows Server 2008 R2, Windows 8, and Windows Server 2012, only version 2 of the CredSSP Protocol is supported.

<11> Section 2.2.1: Windows Group Policy determines which minimum protocol version is accepted by the client.

<12> Section 2.2.1: Windows XP SP3, Windows Vista, Windows Server 2008, Windows 7, Windows Server 2008 R2, Windows 8, and Windows Server 2012 do not implement the **errorCode** field.

<13> Section 2.2.1.1: Where data is a text string, Windows uses a Unicode string defined by a **UNICODE_STRING** structure to encode to ASN.1 OCTET STRING format. For more information see [MSDOCS-UNICODE_STRING]. For a description of Octet String see [MS-DTYP] and [X690].

<14> Section 2.2.1.2: Where data is a text string, Windows uses a Unicode string defined by a **UNICODE_STRING** structure to encode to ASN.1 OCTET STRING format. For more information see [MSDOCS-UNICODE_STRING]. For a description of Octet String see [MS-DTYP] and [X690].

<15> Section 2.2.1.2.1: Where data is a text string, Windows uses a Unicode string defined by a **UNICODE_STRING** structure to encode to ASN.1 OCTET STRING format. For more information see [MSDOCS-UNICODE_STRING]. For a description of Octet String see [MS-DTYP] and [X690].

<16> Section 2.2.1.2.2: Where data is a text string, Windows uses a Unicode string defined by a **UNICODE_STRING** structure to encode to ASN.1 OCTET STRING format. For more information see [MSDOCS-UNICODE_STRING]. For a description of Octet String see [MS-DTYP] and [X690].

<17> Section 2.2.1.2.2.1 ~~<17> Section 2.2.1.2.2.1:~~ Where data is a text string, Windows uses a Unicode string defined by a **UNICODE_STRING** structure to encode to ASN.1 OCTET STRING format. For more information see [MSDOCS-UNICODE_STRING]. For a description of Octet String see [MS-DTYP] and [X690].

<18> Section 2.2.1.2.3: The **TSRemoteGuardCreds** structure is only supported on Windows 10 v1607 operating system client version and on Windows Server 2016 server version and later.

<19> Section 2.2.1.2.3: Where data is a text string, Windows uses a Unicode string defined by a **UNICODE_STRING** structure to encode to ASN.1 OCTET STRING format. For more information see [MSDOCS-UNICODE_STRING]. For a description of Octet String see [MS-DTYP] and [X690].

<20> Section 2.2.1.2.3.1: Where data is a text string, Windows uses a Unicode string defined by a **UNICODE_STRING** structure to encode to ASN.1 OCTET STRING format. For more information see [MSDOCS-UNICODE_STRING]. For a description of Octet String see [MS-DTYP] and [X690].

<21> Section 2.2.1.2.3.1: Windows CredSSP servers use authentication packages provided by Microsoft.

<22> Section 2.2.1.2.3.1: In Windows, the logon credentials that are in the **logonCred** field of **TSRemoteGuardCreds** structure are required to be in a **KERB_TICKET_LOGON** structure ([KERB-TICKET-LOGON]). The **TicketGrantingTicket** member within the **KERB_TICKET_LOGON** structure is an ASN.1-encoded **KRB_CRED** message ([RFC4120], section 5.8.1). The **EncryptionKey** in **KrbCredInfo** ([RFC4120], section 5.8.1) is required to be in a **KERB_RPC_ENCRYPTION_KEY** structure ([MS-RDPEAR] section 2.2.1.2.8). The **ServiceTicket** member within the **KERB_TICKET_LOGON** structure is a ticket to the computer account. Windows CredSSP clients will use Kerberos User to User tickets ([RFC4120], section 2.9.2) as the **ServiceTicket**, but the server does not enforce this. The session key of the **ServiceTicket** is used to encrypt the **EncryptedData** in the **KRB_CRED** message.

Supplemental credentials that are in the **supplementalCreds** field of **TSRemoteGuardCreds** structure are required in the following structure:

```
typedef struct _NTLM_REMOTE_SUPPLEMENTAL_CREDENTIAL {
    ULONG Version;
    ULONG Flags;
    MSV1_0_CREDENTIAL_KEY_TYPE reserved;
    MSV1_0_CREDENTIAL_KEY reserved;
    ULONG reservedsize;
    [size_is(reservedSize)] UCHAR* reserved;
} NTLM_REMOTE_SUPPLEMENTAL_CREDENTIAL;
```

Version: A 32-bit unsigned integer that defines the credential version. This field is 0xFFFF0002.

Flags: A 32-bit unsigned integer containing flags that define the credential options. At least one of the following values is required.

0	1	2	3	4	5	6	7	8	9	10	11	12	13	14	15	16	17	18	19	20	21	22	23	24	25	26	27	28	29	30	31	
0	0	0	0	0	0	0	0	0	0	0	0	0	0	0	0	0	0	0	0	0	0	0	0	0	0	0	0	0	0	0	N	L

Where the bits are defined as follows:

Value	Description
L	Indicates that the LM OWF member is present and valid.
N	Indicates that the NT OWF member is present and valid.

All other bits are set to zero and ignored on receipt.

<23> Section 3.1.1: In Windows, the policy settings for the CredSSP client are expressed in terms of service principal names (SPNs), which define the servers to which the client is allowed to send the user's credentials.

<24> Section 3.1.5: With the exception of Windows XP SP3, the CredSSP server can be configured by using any X.509 certificate that is trusted by the client based on a commonly trusted certificate authority (CA) root or by using a self-signed certificate.

<25> Section 3.1.5: Version 5 of the protocol is available in Windows Server v1803 operating system and later, and by downloading a version-specific update from [MSKB-4088776]. Group Policy determines which minimum protocol version is accepted by the client.

7 Change Tracking

This section identifies changes that were made to this document since the last release. Changes are classified as Major, Minor, or None.

The revision class **Major** means that the technical content in the document was significantly revised. Major changes affect protocol interoperability or implementation. Examples of major changes are:

- A document revision that incorporates changes to interoperability requirements.
- A document revision that captures changes to protocol functionality.

The revision class **Minor** means that the meaning of the technical content was clarified. Minor changes do not affect protocol interoperability or implementation. Examples of minor changes are updates to clarify ambiguity at the sentence, paragraph, or table level.

The revision class **None** means that no new technical changes were introduced. Minor editorial and formatting changes may have been made, but the relevant technical content is identical to the last released version.

The changes made to this document are listed in the following table. For more information, please contact dochelp@microsoft.com.

Section	Description	Revision class
6 Appendix A: Product Behavior	Updated for this version of Windows Server.	Major

8 Index

A

Applicability 10

C

Capability negotiation 10

Change tracking 26

E

Examples - overview 19

F

Fields - vendor-extensible 11

G

Glossary 6

H

Higher-layer triggered events 16

I

Implementer - security considerations 21

Index of security parameters 21

Informative references 9

Initialization 16

Introduction 6

L

Local events 18

M

Message processing 16

Messages

 syntax 12

 transport 12

 TSRequest 12

N

NegoData 13

Normative references 8

O

Overview (synopsis) 9

P

Parameters - security index 21

Preconditions 10

Prerequisites 10

Product behavior 22

- Protocol
 - higher-layer triggered events 16
 - initialization 16
 - local events 18
 - message processing 16
 - sequencing rules 16
 - timer events 18
 - timers 16

R

- References 8
 - informative 9
 - normative 8
- Relationship to other protocols 10

S

- Security
 - implementer considerations 21
 - parameter index 21
- Sequencing rules 16
- Standards assignments 11
- Syntax 12

T

- Timer events 18
- Timers 16
- Tracking changes 26
- Transport 12
- Triggered events - higher-layer 16
- TSCredentials 13
- TSCspDataDetail 14
- TSPasswordCreds 13
- TSRequest 12
- TSRequest message 12
- TSSmartCardCreds 14

V

- Vendor-extensible fields 11
- Versioning 10