

[MC-PRCR]: Peer Channel Custom Resolver Protocol

Intellectual Property Rights Notice for Open Specifications Documentation

- **Technical Documentation.** Microsoft publishes Open Specifications documentation for protocols, file formats, languages, standards as well as overviews of the interaction among each of these technologies.
- **Copyrights.** This documentation is covered by Microsoft copyrights. Regardless of any other terms that are contained in the terms of use for the Microsoft website that hosts this documentation, you may make copies of it in order to develop implementations of the technologies described in the Open Specifications and may distribute portions of it in your implementations using these technologies or your documentation as necessary to properly document the implementation. You may also distribute in your implementation, with or without modification, any schema, IDL's, or code samples that are included in the documentation. This permission also applies to any documents that are referenced in the Open Specifications.
- **No Trade Secrets.** Microsoft does not claim any trade secret rights in this documentation.
- **Patents.** Microsoft has patents that may cover your implementations of the technologies described in the Open Specifications. Neither this notice nor Microsoft's delivery of the documentation grants any licenses under those or any other Microsoft patents. However, a given Open Specification may be covered by Microsoft [Open Specification Promise](#) or the [Community Promise](#). If you would prefer a written license, or if the technologies described in the Open Specifications are not covered by the Open Specifications Promise or Community Promise, as applicable, patent licenses are available by contacting iplg@microsoft.com.
- **Trademarks.** The names of companies and products contained in this documentation may be covered by trademarks or similar intellectual property rights. This notice does not grant any licenses under those rights. For a list of Microsoft trademarks, visit www.microsoft.com/trademarks.
- **Fictitious Names.** The example companies, organizations, products, domain names, email addresses, logos, people, places, and events depicted in this documentation are fictitious. No association with any real company, organization, product, domain name, email address, logo, person, place, or event is intended or should be inferred.

Reservation of Rights. All other rights are reserved, and this notice does not grant any rights other than specifically described above, whether by implication, estoppel, or otherwise.

Tools. The Open Specifications do not require the use of Microsoft programming tools or programming environments in order for you to develop an implementation. If you have access to Microsoft programming tools and environments you are free to take advantage of them. Certain Open Specifications are intended for use in conjunction with publicly available standard specifications and network programming art, and assumes that the reader either is familiar with the aforementioned material or has immediate access to it.

Revision Summary

Date	Revision History	Revision Class	Comments
08/10/2007	0.1	Major	Initial Availability
09/28/2007	0.2	Minor	Updated the technical content.
10/23/2007	0.3	Minor	Updated the technical content.
11/30/2007	0.3.1	Editorial	Revised and edited the technical content; updated links.
01/25/2008	0.3.2	Editorial	Revised and edited the technical content.
03/14/2008	0.3.3	Editorial	Revised and edited the technical content.
05/16/2008	0.3.4	Editorial	Revised and edited the technical content.
06/20/2008	0.3.5	Editorial	Revised and edited the technical content.
07/25/2008	0.3.6	Editorial	Revised and edited the technical content.
08/29/2008	1.0	Major	Updated and revised the technical content.
10/24/2008	1.0.1	Editorial	Revised and edited the technical content.
12/05/2008	2.0	Major	Updated and revised the technical content.
01/16/2009	2.0.1	Editorial	Revised and edited the technical content.
02/27/2009	2.1	Minor	Updated the technical content.
04/10/2009	2.2	Minor	Updated the technical content.
05/22/2009	2.3	Minor	Updated the technical content.
07/02/2009	2.3.1	Editorial	Revised and edited the technical content.
08/14/2009	2.3.2	Editorial	Revised and edited the technical content.
09/25/2009	2.4	Minor	Updated the technical content.
11/06/2009	2.4.1	Editorial	Revised and edited the technical content.
12/18/2009	2.4.2	Editorial	Revised and edited the technical content.
01/29/2010	2.5	Minor	Updated the technical content.
03/12/2010	2.5.1	Editorial	Revised and edited the technical content.
04/23/2010	2.5.2	Editorial	Revised and edited the technical content.
06/04/2010	3.0	Major	Updated and revised the technical content.
07/16/2010	4.0	Major	Significantly changed the technical content.

Date	Revision History	Revision Class	Comments
08/27/2010	5.0	Major	Significantly changed the technical content.
10/08/2010	6.0	Major	Significantly changed the technical content.
11/19/2010	7.0	Major	Significantly changed the technical content.
01/07/2011	8.0	Major	Significantly changed the technical content.
02/11/2011	8.1	Minor	Clarified the meaning of the technical content.
03/25/2011	8.1	No change	No changes to the meaning, language, or formatting of the technical content.
05/06/2011	8.1	No change	No changes to the meaning, language, or formatting of the technical content.
06/17/2011	8.2	Minor	Clarified the meaning of the technical content.
09/23/2011	8.2	No change	No changes to the meaning, language, or formatting of the technical content.
12/16/2011	9.0	Major	Significantly changed the technical content.
03/30/2012	9.0	No change	No changes to the meaning, language, or formatting of the technical content.
07/12/2012	9.0	No change	No changes to the meaning, language, or formatting of the technical content.
10/25/2012	10.0	Major	Significantly changed the technical content.
01/31/2013	11.0	Major	Significantly changed the technical content.
08/08/2013	11.0	No change	No changes to the meaning, language, or formatting of the technical content.
11/14/2013	11.0	No change	No changes to the meaning, language, or formatting of the technical content.

Contents

1 Introduction	6
1.1 Glossary	6
1.2 References	7
1.2.1 Normative References	7
1.2.2 Informative References	8
1.3 Overview	8
1.3.1 Identifiers	8
1.3.1.1 Mesh Name	8
1.3.1.2 ClientId	8
1.3.1.3 RegistrationId	9
1.3.2 Connecting to the Resolver Service	9
1.3.3 List of Resolver Service Operations	9
1.3.4 Registration Record Maintenance	9
1.4 Relationship to Other Protocols	9
1.5 Prerequisites/Preconditions	10
1.6 Applicability Statement	10
1.7 Versioning and Capability Negotiation	10
1.8 Vendor-Extensible Fields	10
1.9 Standards Assignments	10
2 Messages	11
2.1 Transport	11
2.2 Message Syntax	11
2.2.1 Namespaces	11
2.2.2 Structures Used	12
2.2.2.1 PeerNodeAddress Structure	12
2.2.2.2 RefreshResult Enumeration	13
2.2.3 Resolver Client Messages	14
2.2.3.1 Register Message	14
2.2.3.2 Resolve Message	15
2.2.3.3 Refresh Message	16
2.2.3.4 Update Message	16
2.2.3.5 Unregister Message	17
2.2.3.6 GetServiceInfo Message	18
2.2.4 Resolver Service Messages	18
2.2.4.1 RegisterResponse Message	18
2.2.4.2 ResolveResponse Message	19
2.2.4.3 RefreshResponse Message	20
2.2.4.4 ServiceSettingsResponseInfo Message	21
3 Protocol Details	23
3.1 Resolver Client Details	23
3.1.1 Abstract Data Model	23
3.1.2 Timers	24
3.1.2.1 Client Refresh Timer	24
3.1.2.2 Message Response Timer	24
3.1.3 Initialization	24
3.1.4 Higher-Layer Triggered Events	24
3.1.4.1 Register	25
3.1.4.2 Update	25

3.1.4.3	Resolve	25
3.1.4.4	Unregister	25
3.1.4.5	Refresh	25
3.1.4.6	GetServiceInfo	25
3.1.5	Message Processing Events and Sequencing Rules	25
3.1.5.1	RegisterResponse Message	25
3.1.5.2	ResolveResponse Message	26
3.1.5.3	RefreshResponse Message	26
3.1.5.4	ServiceSettingsResponseInfo Message	26
3.1.6	Timer Events	26
3.1.6.1	Client Refresh Timer	26
3.1.6.2	Message Response Timer	26
3.1.7	Other Local Events	26
3.1.7.1	Shutting Down the Resolver Service	26
3.2	Resolver Service Details	27
3.2.1	Abstract Data Model	27
3.2.2	Timers	27
3.2.2.1	Maintenance Timer	27
3.2.3	Initialization	27
3.2.4	Higher-Layer Triggered Events	27
3.2.5	Message Processing Events and Sequencing Rules	27
3.2.5.1	Register	27
3.2.5.2	Update	28
3.2.5.3	Resolve	28
3.2.5.4	Unregister	28
3.2.5.5	Refresh	28
3.2.5.6	GetServiceInfo	28
3.2.6	Timer Events	29
3.2.6.1	Maintenance Timer	29
3.2.7	Other Local Events	29
4	Protocol Examples	30
4.1	Peer Discovery	30
5	Security	32
5.1	Security Considerations for Implementers	32
5.2	Index of Security Parameters	32
6	Appendix A: Full WSDL	33
7	Appendix B: Product Behavior	38
8	Change Tracking	39
9	Index	40

1 Introduction

The Peer Channel Custom Resolver Protocol is used for storage and retrieval of **endpoint information** of clients that have access to a known service. Clients that use the service can store their own endpoint information at the service and obtain endpoint information about other clients in order to establish direct connections between them.

Sections 1.8, 2, and 3 of this specification are normative and can contain the terms MAY, SHOULD, MUST, MUST NOT, and SHOULD NOT as defined in RFC 2119. Sections 1.5 and 1.9 are also normative but cannot contain those terms. All other sections and examples in this specification are informative.

1.1 Glossary

The following terms are defined in [\[MS-GLOS\]](#):

globally unique identifier (GUID)
.NET Framework

The following terms are specific to this document:

ClientId: A unique string that the client uses to identify itself to the **resolver service**, as described in section [1.3.1.2](#).

endpoint information: An endpoint address, formatted as a Uniform Resource Identifier (URI), along with a set of IP addresses. Describes the set of addresses on which a node is listening.

expiration time: The time after which a record is no longer valid.

mesh name: The unique identifier of a collection of **registration records**. The nodes referred to by these **registration records** typically reside in a single mesh, as defined in [\[MC-PRCH\]](#), section [1.1](#).

PeerNodeAddress: A structure that contains the URI of a node and a set of IP addresses on which the client is listening (section [2.2.2.1](#)).

RegistrationId: A unique identifier in the form of a **GUID**, as described in section [1.3.1.3](#).

registration record: A set of **endpoint information** that is stored at the **resolver service**.

registration lifetime: The amount of time during which a **registration record** is guaranteed to be preserved by the **resolver service**; always associated with a particular **registration record**. This time starts upon the successful addition of a **registration record** to the **resolver service**. After this time has elapsed, the **resolver service** may choose to delete the corresponding **registration record** (section [3](#)).

resolver client: An application endpoint that uses a **resolver service** to publish or obtain **endpoint information**.

resolver service: An application implementing this protocol that stores and distributes **endpoint information**.

MAY, SHOULD, MUST, SHOULD NOT, MUST NOT: These terms (in all caps) are used as described in [\[RFC2119\]](#). All statements of optional behavior use either MAY, SHOULD, or SHOULD NOT.

1.2 References

References to Microsoft Open Specifications documentation do not include a publishing year because links are to the latest version of the documents, which are updated frequently. References to other documents include a publishing year when one is available.

A reference marked "(Archived)" means that the reference document was either retired and is no longer being maintained or was replaced with a new document that provides current implementation details. We archive our documents online [[Windows Protocol](#)].

1.2.1 Normative References

We conduct frequent surveys of the normative references to assure their continued availability. If you have any issue with finding a normative reference, please contact dochelp@microsoft.com. We will assist you in finding the relevant information. Please check the archive site, <http://msdn2.microsoft.com/en-us/library/E4BD6494-06AD-4aed-9823-445E921C9624>, as an additional source.

[MC-NMF] Microsoft Corporation, "[.NET Message Framing Protocol](#)".

[MC-PRCH] Microsoft Corporation, "[Peer Channel Protocol](#)".

[MS-DTYP] Microsoft Corporation, "[Windows Data Types](#)".

[MS-WSPOL] Microsoft Corporation, "[Web Services: Policy Assertions and WSDL Extensions](#)".

[RFC2119] Bradner, S., "Key words for use in RFCs to Indicate Requirement Levels", BCP 14, RFC 2119, March 1997, <http://www.rfc-editor.org/rfc/rfc2119.txt>

[SOAP1.1] Box, D., Ehnebuske, D., Kakivaya, G., et al., "Simple Object Access Protocol (SOAP) 1.1", May 2000, <http://www.w3.org/TR/2000/NOTE-SOAP-20000508/>

[SOAP1.2-1/2003] Gudgin, M., Hadley, M., Mendelsohn, N., et al., "SOAP Version 1.2 Part 1: Messaging Framework", W3C Recommendation, June 2003, <http://www.w3.org/TR/2003/REC-soap12-part1-20030624>

[WS-Addressing] Box, D., Christensen, E., Ferguson, D., et al., "Web Services Addressing (WS-Addressing)", August 2004, <http://www.w3.org/Submission/ws-addressing/>

[WSA1.0-Metadata] W3C, "WS-Addressing 1.0 Metadata Namespace", W3C Recommendation, <http://www.w3.org/2007/05/addressing/metadata/>

[WSA1.0-WSDLBinding] W3C, "WS-Addressing 1.0 WSDL Binding Namespace", W3C Recommendation, <http://www.w3.org/2006/05/addressing/wsd/>

[WSADDR] Gudgin, M., Hadley, M., and Rogers, T., "Web Services Addressing (WS-Addressing) 1.0", W3C Recommendation, May 2006, <http://www.w3.org/2005/08/addressing>

[WSDL] Christensen, E., Curbera, F., Meredith, G., and Weerawarana, S., "Web Services Description Language (WSDL) 1.1", W3C Note, March 2001, <http://www.w3.org/TR/2001/NOTE-wsdl-20010315>

[WSDLSOAP] Angelov, D., Ballinger, K., Butek, R., et al., "WSDL 1.1 Binding Extension for SOAP 1.2", W3c Member Submission, April 2006, <http://www.w3.org/Submission/wsd11soap12/>

[WSP1.5-Namespace] W3C, "Web Services Policy 1.5 Namespace", W3C Recommendation, <http://www.w3.org/ns/ws-policy/>

[WSPOLICY] Bajaj, S., Box, D., Chappell, D., et al., "Web Services Policy Framework (WS-POLICY) and Web Services Policy Attachment (WS-PolicyAttachment)", March 2006, <http://schemas.xmlsoap.org/ws/2004/09/policy>

[WSSU1.0] OASIS Standard, "WS Security Utility 1.0", 2004, <http://docs.oasis-open.org/wss/2004/01/oasis-200401-wss-wssecurity-utility-1.0.xsd>

[XMLDSig/2008] Bartel, M., Boyer, J., Fox, B., LaMacchia, B., and Simon, E., "XML-Signature Syntax and Processing", June 2008, <http://www.w3.org/TR/xmlsig-core/>

[XMLNS] Bray, T., Hollander, D., Layman, A., et al., Eds., "Namespaces in XML 1.0 (Third Edition)", W3C Recommendation, December 2009, <http://www.w3.org/TR/2009/REC-xml-names-20091208/>

[XMLSCHEMA] World Wide Web Consortium, "XML Schema", September 2005, <http://www.w3.org/2001/XMLSchema>

1.2.2 Informative References

[MS-GLOS] Microsoft Corporation, "[Windows Protocols Master Glossary](#)".

[MS-PNRP] Microsoft Corporation, "[Peer Name Resolution Protocol \(PNRP\) Version 4.0](#)".

1.3 Overview

This protocol is intended to be used together with the Peer Channel Protocol [\[MC-PRCH\]](#) as a peer discovery service.

The Peer Channel Custom Resolver Protocol is a client/server protocol that is used to register and retrieve client endpoint information at a well-known resolver service. The information that is registered and retrieved is the **PeerNodeAddress** of clients associated with a named mesh. This information can then be used to establish direct connections between these clients. Security for this protocol is configured by a higher-layer protocol or application.

There are two primary roles in the Peer Channel Custom Resolver Protocol:

- **Resolver service** - Stores endpoint information and handles requests to add, delete, or update that information.
- **Resolver client** - Sends requests to the resolver service to add, delete, or update endpoint information, or to request a list of the endpoint information of other clients.

1.3.1 Identifiers

1.3.1.1 Mesh Name

Registration information is associated with a string called a **mesh name**, which is used to group related sets of endpoint information. When **registration records** are created or requested, the corresponding mesh name must be included. Endpoint information is then organized by mesh name at the resolver service. The resolver service guarantees that clients requesting endpoint information corresponding to a particular mesh name will only receive endpoint information that was registered with the same mesh name.

1.3.1.2 ClientId

Each resolver client generates a unique string that is used to identify itself to the resolver service. This ID remains constant throughout the lifetime of the resolver client.

1.3.1.3 RegistrationId

When a new registration record is created at the resolver service, it is assigned a unique RegistrationId in the form of a **GUID**. This RegistrationId remains valid for that registration record until the registration record expires or is unregistered.

1.3.2 Connecting to the Resolver Service

The resolver client is configured with the location of the resolver service and a transport that matches the requirements of the service. All clients need to be configured to use the same transport. The connection that is used by the custom resolver service and the custom resolver client to communicate is protocol independent.

1.3.3 List of Resolver Service Operations

The Peer Channel Custom Resolver Protocol is initiated by a request from a resolver client (with the sole exception of registration record maintenance; see section [1.3.4](#)). The following operations are supported by the resolver service:

- Register: Creates a new registration record at the resolver service and populates it with endpoint information that is contained in the register request.
- Update: Changes the information that is contained in a specific registration record.
- Unregister: Deletes a registration record.
- Refresh: Changes the expiry time that is associated with a registration record (section [1.3.4](#)).
- Resolve: Retrieves a collection of registration records that is associated with a particular mesh name.
- GetServiceInfo: Retrieves a Boolean value indicating whether a corresponding PeerChannel Protocol node will use referrals to initiate neighbor connections.

1.3.4 Registration Record Maintenance

Registration records reside at the custom resolver service and are associated with an expiry time and date. These records are to be deleted or marked as invalid by that expiry time (which is determined by the implementation of the service), unless the resolver client that initially registered that endpoint information sends a request to the service that the record be stored longer.

If the resolver service fails, the resolver clients that use the service attempt to refresh or reregister their information. After the resolver service is restarted, it repopulates its **records data store** of registration records upon receiving refresh or reregistration requests from resolver clients.

1.4 Relationship to Other Protocols

This protocol is transport-agnostic, and therefore, it may be used together with a variety of transport protocols, for example, TCP and HTTP.

The messages used in this protocol are formatted in XML/SOAP [\[SOAP1.2-1/2003\]](#) [\[XMLDSig/2008\]](#). This involves the use of the .NET Message Framing Protocol Specification [\[MC-NMF\]](#) for encoding SOAP messages.

This protocol shares characteristics with, and could potentially be substituted for, other name resolution systems, such as the Peer Name Resolution Protocol (PNRP) [\[MS-PNRP\]](#). This protocol is

intended for use by the Peer Channel Protocol [\[MC-PRCH\]](#) for neighbor discovery when PNRP is unavailable.

1.5 Prerequisites/Preconditions

All resolver clients must be configured with the location and transport protocol of the resolver service, as well as any security information, if applicable.

1.6 Applicability Statement

This protocol is intended for use together with the Peer Channel Protocol ([\[MC-PRCH\]](#)) as a means to enable neighbor discovery. This protocol is suitable for storage and distribution of endpoint information or for a mapping service that associates endpoint information with mesh names. It is not intended for, nor is it ideal for, use with hierarchal namespaces, for example, DNS.

This protocol does not guarantee the reliability of endpoint information, longevity of registration records, or availability of the resolver service.

1.7 Versioning and Capability Negotiation

None.

1.8 Vendor-Extensible Fields

None.

1.9 Standards Assignments

None.

2 Messages

2.1 Transport

The transport is configured under a higher-layer protocol or application. This protocol does not specify or require any particular transport mechanism; however, TCP SHOULD be used and other transport protocols MAY be used.

2.2 Message Syntax

Peer Channel Custom Resolver messages are defined by the Web Services Description Language (WSDL), as specified in [\[WSDL\]](#), and MUST be formatted using the SOAP syntax ([\[SOAP1.2-1/2003\]](#)). The schema for `wsp:PolicyReference` is defined in Web Services Policy Framework ([\[WSPOLICY\]](#)).

2.2.1 Namespaces

This specification defines and references various XML namespaces that use the mechanisms specified in [\[XMLNS\]](#). Although the specification associates a specific XML namespace prefix for each XML namespace that is used, the choice of any particular XML namespace prefix is implementation-specific and not significant for interoperability.

Prefix	Namespace URI	Reference
soapenc	http://schemas.xmlsoap.org/soap/encoding	[SOAP1.1]
wsap	http://schemas.xmlsoap.org/ws/2004/08/addressing/policy	http://schemas.xmlsoap.org/ws/2004/08/addressing/policy
wsa10	http://www.w3.org/2005/08/addressing	[WSADDR]
msc	http://schemas.microsoft.com/ws/2005/12/wsdl/contract	[MS-WSPOL]
wsp	http://www.w3.org/ns/ws-policy	[WSP1.5-Namespace]
Wsam	http://www.w3.org/2007/05/addressing/metadata	[WSA1.0-Metadata]
soap12	http://schemas.xmlsoap.org/wsdl/soap12/	[WSDLSOAP]
wsa	http://schemas.xmlsoap.org/ws/2004/08/addressing	[WS-Addressing]
wsaw	http://www.w3.org/2006/05/addressing/wsdl	[WSA1.0-WSDLBinding]
soap	http://schemas.xmlsoap.org/wsdl/soap/	http://schemas.xmlsoap.org/wsdl/soap/
wsu	http://docs.oasis-open.org/wss/2004/01/oasis-200401-wss-wssecurity-utility-1.0.xsd	[WSSU1.0]
xsd	http://www.w3.org/2001/XMLSchema	[WSDLSOAP]
wsdl	http://schemas.xmlsoap.org/wsdl/	http://schemas.xmlsoap.org/wsdl/

Prefix	Namespace URI	Reference
peer	http://schemas.microsoft.com/net/2006/05/peer	See Section 6 Appendix A

2.2.2 Structures Used

2.2.2.1 PeerNodeAddress Structure

The PeerNodeAddress structure MUST contain a URI and one or more IPAddresses. It is intended to be used to describe a Peer Channel protocol endpoint. While in use by this protocol, a PeerNodeAddress structure SHOULD only refer to the local endpoint. The example here shows the use of the PeerNodeAddress structure.

```

<xs:schema
  xmlns:tns="http://schemas.datacontract.org/2004/07/System.Net"
  xmlns:xs="http://www.w3.org/2001/XMLSchema"
  targetNamespace=
    "http://schemas.datacontract.org/2004/07/System.Net"
  xmlns:a="http://www.w3.org/2005/08/addressing/"
  xmlns:d5p1="http://schemas.datacontract.org/2004/07/System.Net"
  attributeFormDefault="unqualified"
  elementFormDefault="qualified" >
  <xs:import namespace=
    "http://schemas.microsoft.com/2003/10/Serialization/Arrays"
  />
  <xs:import namespace="http://www.w3.org/2005/08/addressing/" />
  <xs:complexType name="IPAddress">
    <xs:sequence>
      <xs:element name="m_Address" type="xs:unsignedInt" />
      <xs:element name="m_Family" type="xs:string" />
      <xs:element name="m_HashCode" type="xs:unsignedInt" />
      <xs:element name="m_Numbers">
        <xs:complexType>
          <xs:sequence>
            <xs:element
              maxOccurs="unbounded"
              xmlns:q1=
                "http://schemas.microsoft.com/2003/10/Serialization/Arrays"
              ref="q1:unsignedShort"
            />
          </xs:sequence>
        </xs:complexType>
      </xs:element>
      <xs:element name="m_ScopeId" type="xs:unsignedInt" />
    </xs:sequence>
  </xs:complexType>
  <xs:complexType name="PeerNodeAddress">
    <xs:sequence>
      <xs:element name="EndpointAddress">
        <xs:complexType>
          <xs:sequence>
            <xs:element ref="a:Address" />
          </xs:sequence>
        </xs:complexType>
      </xs:element>
      <xs:element name="IPAddresses">

```

```

    <xs:complexType>
      <xs:sequence>
        <xs:element maxOccurs="unbounded" ref="d5p1:IPAddress" />
      </xs:sequence>
    </xs:complexType>
  </xs:element>
</xs:sequence>
</xs:complexType>
</xs:schema>

```

The following table provides information about the different values of PeerNodeAddress attributes.

Value	Description
EndpointAddress	MUST contain a reference to the Address of the node.
Address	A reference to the endpoint (URI) of the node.
IPAddresses	This MUST contain one or more IPAddress structures.
IPAddress	Describes a complete IPAddress.
IPAddress/m_Address	"0" indicates an IPv6 address. Otherwise, the address as an unsigned 32-bit number.
IPAddress/m_Family	The address family of the IPAddress. Acceptable strings are "Internetwork" if the address is an IPv4 address; or "InternetworkV6" if the address is an IPv6 address.
IPAddress/m_HashCode	This value MUST be set to "0". Upon parsing this field from a received message, this element MUST be ignored.
IPAddress/m_Numbers	This element contains the serialized version of the address bytes that are grouped as 16-bit numbers in big-endian format. For IPv4 addresses, this element MAY contain 0 instances. For IPv6 addresses, this element MUST contain exactly 8 "unsignedShort" subelements.
IPAddress/m_Numbers/unsignedShort	MUST contain a 16-bit number.
IPAddress/m_ScopeId	For an IPv6 address, this element MUST contain the Scope ID of the address. For IPv4 addresses, this element MUST be ignored. All IPAddresses in a single PeerNodeAddress MUST have the same ScopeId.

2.2.2.2 RefreshResult Enumeration

This is sent as part of the [RefreshResponse](#) message to indicate the result of an attempt to refresh a registration record. It has the following valid values, formatted as strings.

```

<xs:simpleType name="RefreshResult">
  <xs:restriction base="xs:string">
    <xs:enumeration value="Success" />
    <xs:enumeration value="RegistrationNotFound" />
  </xs:restriction>
</xs:simpleType>

```

```
<xs:element name="RefreshResult" nillable="true" type="tns:RefreshResult" />
```

Enumeration value	Description
Success	The registration record was found and refreshed.
RegistrationNotFound	The resolver service could not find the registration record.

2.2.3 Resolver Client Messages

2.2.3.1 Register Message

The Register message is sent by the client to register its [PeerNodeAddress](#) structure with a custom resolver service.

Message:

```
<wsdl:message name="RegisterInfo">  
  <wsdl:part name="Register" xmlns:peer="http://schemas.microsoft.com/net/2006/05/peer"  
    element="peer:Register" />  
</wsdl:message>
```

Operation:

```
<wsdl:operation name="Register">  
  <wsdl:input  
    wsam:Action="http://schemas.microsoft.com/net/2006/05/peer/resolver/Register"  
    name="RegisterInfo" message="tns:RegisterInfo" />  
</wsdl:operation>
```

Data Types:

```
<xs:complexType name="Register">  
  <xs:sequence>  
    <xs:element minOccurs="0" name="ClientId" type="ser:guid" />  
    <xs:element minOccurs="0" name="MeshId" nillable="true" type="xs:string" />  
    <xs:element minOccurs="0" name="NodeAddress" nillable="true"  
      type="tns:PeerNodeAddress"/>  
  </xs:sequence>  
</xs:complexType>  
  
<xs:element name="Register" nillable="true" type="tns:Register" />  
<xs:complexType name="PeerNodeAddress">  
  <xs:sequence>  
    <xs:element minOccurs="0" name="EndpointAddress" nillable="true"  
      xmlns:q1="http://www.w3.org/2005/08/addressing" type="q1:EndpointReferenceType" />  
    <xs:element minOccurs="0" name="IPAddresses" nillable="true"  
      xmlns:q2="http://schemas.datacontract.org/2004/07/System.Net" type="q2:ArrayOfIPAddress" />  
  </xs:sequence>  
</xs:complexType>  
  
  <xs:element name="PeerNodeAddress" nillable="true" type="tns:PeerNodeAddress" />
```

Refer to the following table for information about the different values of the "xs:element name" attribute.

Value	Description
ClientId	A string identifying the resolver client. This MUST be unique and SHOULD be created upon the creation of the resolver client. The ClientId of a particular resolver client SHOULD be valid for the lifetime of that client.
MeshId	The mesh name.
NodeAddress	A PeerNodeAddress structure containing the resolver client's endpoint information.

2.2.3.2 Resolve Message

The Resolve message is sent by the resolver client to discover the [PeerNodeAddress](#) structure of other clients.

Message:

```
<wsdl:message name="ResolveInfo">
  <wsdl:part name="Resolve" xmlns:peer="http://schemas.microsoft.com/net/2006/05/peer"
    element="peer:Resolve" />
</wsdl:message>
```

Operation:

```
<wsdl:operation name="Resolve">
  <wsdl:input
    wsam:Action="http://schemas.microsoft.com/net/2006/05/peer/resolver/Resolve"
    name="ResolveInfo" message="tns:ResolveInfo" />
</wsdl:operation>
```

Data Types:

```
<xs:complexType name="ResolveInfo">
  <xs:sequence>
    <xs:element minOccurs="0" name="ClientId" type="ser:guid" />
    <xs:element minOccurs="0" name="MaxAddresses" type="xs:int" />
    <xs:element minOccurs="0" name="MeshId" nillable="true" type="xs:string" />
  </xs:sequence>
</xs:complexType>

<xs:element name="ResolveInfo" nillable="true" type="tns:ResolveInfo" />

<xs:element name="Resolve" nillable="true" type="tns:ResolveInfo" />
```

Refer to the following table for information about the different values of the "xs:element name" attribute.

Value	Description
ClientId	A string identifying the resolver client. This MUST be unique and SHOULD be created upon the creation of the resolver client. The ClientId of a particular resolver client SHOULD be valid for the lifetime of that client.

Value	Description
MaxAddresses	The maximum number of registration records that should be returned by the corresponding ResolveResponse message. This SHOULD be set to "5".
MeshId	The mesh name.

2.2.3.3 Refresh Message

The Refresh message is sent by a client to refresh its registration record with the resolver service.

```

Message:
<wsdl:message name="RefreshInfo">
  <wsdl:part name="Refresh" xmlns:peer="http://schemas.microsoft.com/net/2006/05/peer"
  element="peer:Refresh" />
</wsdl:message>

```

```

Operation:
<wsdl:operation name="Refresh">
  <wsdl:input
  wsam:Action="http://schemas.microsoft.com/net/2006/05/peer/resolver/Refresh"
  name="RefreshInfo" message="tns:RefreshInfo" />
</wsdl:operation>

```

```

Data Types:
<xs:complexType name="RefreshInfo">
  <xs:sequence>
    <xs:element minOccurs="0" name="MeshId" nillable="true" type="xs:string" />
    <xs:element minOccurs="0" name="RegistrationId" type="ser:guid" />
  </xs:sequence>
</xs:complexType>
<xs:element name="RefreshInfo" nillable="true" type="tns:RefreshInfo" />
<xs:element name="Refresh" nillable="true" type="tns:RefreshInfo" />

```

Refer to the following table for information about the different values of the "xs:element name" attribute.

Value	Description
MeshId	The mesh name.
RegistrationId	A string that uniquely identifies the registration record of a particular resolver client. Created by the resolver service as a result of processing a Register message.

2.2.3.4 Update Message

The Update message is sent by the resolver client when some details of its registration record need to be updated, for example, when its IP addresses have changed.

```

Message:

```



```

<wsdl:message name="UpdateInfo">
  <wsdl:part name="UpdateInfo" xmlns:peer="http://schemas.microsoft.com/net/2006/05/peer"
  element="peer:UpdateInfo" />
</wsdl:message>

Operation:
<wsdl:operation name="Update">
  <wsdl:input wsam:Action="http://schemas.microsoft.com/net/2006/05/peer/resolver/Update"
  name="UpdateInfo" message="tns:UpdateInfo" />
</wsdl:operation>

Data Types:
<xs:complexType name="UpdateInfo">
  <xs:sequence>
    <xs:element minOccurs="0" name="ClientId" type="ser:guid" />
    <xs:element minOccurs="0" name="MeshId" nillable="true" type="xs:string" />
    <xs:element minOccurs="0" name="NodeAddress" nillable="true" type="tns:PeerNodeAddress"
  />
    <xs:element minOccurs="0" name="RegistrationId" type="ser:guid" />
  </xs:sequence>
</xs:complexType>
<xs:element name="UpdateInfo" nillable="true" type="tns:UpdateInfo" />

```

Refer to the following table for information about the different values of the "xs:element name" attribute.

Value	Description
ClientId	A string identifying the resolver client. This MUST be unique and SHOULD be created upon the creation of the resolver client. The ClientId of a particular resolver client SHOULD be valid for the lifetime of that client.
MeshId	The mesh name.
NodeAddress	A PeerNodeAddress structure containing the updated endpoint information to be written at the registration record indicated by RegistrationId . See [MC-PRCH] section 2.2.2.2.
RegistrationId	A GUID identifying the registration record to be updated. Created by the resolver service as a result of processing a Register message.

2.2.3.5 Unregister Message

The Unregister message is sent by a resolver client to remove its registration record from the service.

```

Message:
<wsdl:message name="UnregisterInfo">
  <wsdl:part name="Unregister" xmlns:peer="http://schemas.microsoft.com/net/2006/05/peer"
  element="peer:Unregister" />
</wsdl:message>

Operation:

```

```

<wsdl:operation name="Unregister">
  <wsdl:input
wsam:Action="http://schemas.microsoft.com/net/2006/05/peer/resolver/Unregister"
name="UnregisterInfo" message="tns:UnregisterInfo" />
</wsdl:operation>

```

Data Types:

```

<xs:complexType name="UnregisterInfo">
  <xs:sequence>
    <xs:element minOccurs="0" name="MeshId" nillable="true" type="xs:string" />
    <xs:element minOccurs="0" name="RegistrationId" type="ser:guid" />
  </xs:sequence>
</xs:complexType>
<xs:element name="UnregisterInfo" nillable="true" type="tns:UnregisterInfo" />
<xs:element name="Unregister" nillable="true" type="tns:UnregisterInfo" />

```

Refer to the following table for information about the different values of the "xs:element name" attribute.

Value	Description
MeshId	The mesh name.
RegistrationId	A unique string identifying a registration record to be deleted.

2.2.3.6 GetServiceInfo Message

The GetServiceInfo message is sent by the resolver client during the initialization of a Peer Channel protocol client. It is used to determine whether the Peer Channel protocol client will use referrals to discover new neighbors.

Message:

```

<wsdl:message name="IPeerResolverContract_GetServiceInfo_InputMessage" />

```

Operation:

```

<wsdl:operation name="GetServiceInfo">
  <wsdl:input
wsam:Action="http://schemas.microsoft.com/net/2006/05/peer/resolver/GetServiceSettings"
message="tns:IPeerResolverContract_GetServiceInfo_InputMessage" />
</wsdl:operation>

```

2.2.4 Resolver Service Messages

2.2.4.1 RegisterResponse Message

The RegisterResponse message is sent by the resolver service in response to a [Register](#) or [Update](#) message. It is only sent to the originator of the Register or Update message, and it indicates the result of an attempt to either create a new registration record or to update an existing one.

```

Message:
<wsdl:message name="RegisterResponseInfo">
  <wsdl:part name="RegisterResponse"
    xmlns:peer="http://schemas.microsoft.com/net/2006/05/peer" element="peer:RegisterResponse" />
</wsdl:message>

```

```

Operation:
<wsdl:operation name="Register">
  <wsdl:output
    wsam:Action="http://schemas.microsoft.com/net/2006/05/peer/resolver/RegisterResponse"
    name="RegisterResponseInfo" message="tns:RegisterResponseInfo" />
</wsdl:operation>

```

```

Data Types:
<xs:complexType name="RegisterResponse">
  <xs:sequence>
    <xs:element minOccurs="0" name="RegistrationId" type="ser:guid" />
    <xs:element minOccurs="0" name="RegistrationLifetime" type="ser:duration" />
  </xs:sequence>
</xs:complexType>
<xs:element name="RegisterResponse" nillable="true" type="tns:RegisterResponse" />

```

Refer to the following table for information about the different values of the "xs:element name" attribute.

Value	Description
RegistrationId	A unique string that identifies the newly created registration record. Created by the resolver service as a result of a registration request.
RegistrationLifetime	The duration for which the resolver service guarantees that the newly created registration record will not be deleted. Formatted as an xs:duration, as specified in [XMLSCHEMA] Part 2: Datatypes, section 3.2.6.

2.2.4.2 ResolveResponse Message

The ResolveResponse message is sent by the resolver service in response to a [Resolve](#) message. It contains endpoint information that corresponds to the details of the Resolve request.

```

Message:
<wsdl:message name="ResolveResponseInfo">
  <wsdl:part name="ResolveResponse"
    xmlns:peer="http://schemas.microsoft.com/net/2006/05/peer" element="peer:ResolveResponse" />
</wsdl:message>

```

```

Operation:
<wsdl:operation name="Resolve">
  <wsdl:output
    wsam:Action="http://schemas.microsoft.com/net/2006/05/peer/resolver/ResolveResponse"
    name="ResolveResponseInfo" message="tns:ResolveResponseInfo" />
</wsdl:operation>

```

```

Data Types:
<xs:complexType name="ResolveResponseInfo">
  <xs:sequence>
    <xs:element minOccurs="0" name="Addresses" nillable="true"
type="tns:ArrayOfPeerNodeAddress" />
  </xs:sequence>
</xs:complexType>

  <xs:element name="ResolveResponseInfo" nillable="true" type="tns:ResolveResponseInfo" />

  <xs:complexType name="ArrayOfPeerNodeAddress">
    <xs:sequence>
      <xs:element minOccurs="0" maxOccurs="unbounded" name="PeerNodeAddress" nillable="true"
type="tns:PeerNodeAddress" />
    </xs:sequence>
  </xs:complexType>
  <xs:element name="ArrayOfPeerNodeAddress" nillable="true" type="tns:ArrayOfPeerNodeAddress"
/>
/>

<xs:complexType name="PeerNodeAddress">
  <xs:sequence>
    <xs:element minOccurs="0" name="EndpointAddress" nillable="true"
xmlns:q1="http://www.w3.org/2005/08/addressing" type="q1:EndpointReferenceType" />
    <xs:element minOccurs="0" name="IPAddresses" nillable="true"
xmlns:q2="http://schemas.datacontract.org/2004/07/System.Net" type="q2:ArrayOfIPAddress" />
  </xs:sequence>
</xs:complexType>
<xs:element name="PeerNodeAddress" nillable="true" type="tns:PeerNodeAddress" />

```

Refer to the following table for information about the different values of the "xs:element name" attribute for the attributes introduced in this section.

Value	Description
Addresses	A list of PeerNodeAddress structures that are associated with the MeshId element that is specified in the Resolve message. There is no limit to the number of PeerNodeAddress elements that can be contained here.
ArrayOfPeerNodeAddress	An unbounded array of PeerNodeAddress structures.
PeerNodeAddress	See section 2.2.2.1 .

2.2.4.3 RefreshResponse Message

The RefreshResponse message is sent by the resolver service in response to a [Refresh](#) message. It is sent to the originator of the Refresh message and indicates the result of an attempt to extend the expiration time of the registration record for a resolver client.

```

Message:
<wsdl:message name="RefreshResponseInfo">
  <wsdl:part name="RefreshResponse"
xmlns:peer="http://schemas.microsoft.com/net/2006/05/peer" element="peer:RefreshResponse" />
</wsdl:message>

```

```

Operation:
<wsdl:operation name="Refresh">
  <wsdl:output
wsam:Action="http://schemas.microsoft.com/net/2006/05/peer/resolver/RefreshResponse"
name="RefreshResponseInfo" message="tns:RefreshResponseInfo" />
</wsdl:operation>

Data Types:
<xs:complexType name="RefreshResponseInfo">
  <xs:sequence>
    <xs:element minOccurs="0" name="RegistrationLifetime" type="ser:duration" />
    <xs:element minOccurs="0" name="Result"
xmlns:q3="http://schemas.datacontract.org/2004/07/System.ServiceModel.PeerResolvers"
type="q3:RefreshResult" />
  </xs:sequence>
</xs:complexType>
<xs:element name="RefreshResponseInfo" nillable="true" type="tns:RefreshResponseInfo" />
<xs:element name="RefreshResponse" nillable="true" type="tns:RefreshResponseInfo" />

<xs:simpleType name="RefreshResult">
  <xs:restriction base="xs:string">
    <xs:enumeration value="Success" />
    <xs:enumeration value="RegistrationNotFound" />
  </xs:restriction>
</xs:simpleType>
<xs:element name="RefreshResult" nillable="true" type="tns:RefreshResult" />

```

Refer to the following table for information about the different values of the "xs:element name" attribute.

Value	Description
RegistrationLifetime	The duration the resolver service guarantees that the refreshed registration record will not be deleted. It is formatted as an xs:duration data type ([XMLSCHEMA] , Part 2, section 3.2.6).
Result	A string indicating the result of the refresh operation. It MUST be one of two values: "Success" if the registration was successful. "RegistrationNotFound" if the RegistrationId element given by the client could not be found by the service.

2.2.4.4 ServiceSettingsResponseInfo Message

The ServiceSettingsResponseInfo message is sent by the resolver service in response to a [GetServiceInfo](#) message. The message contains a Boolean value indicating whether referrals are to be used by Peer Channel protocol clients. For more information about the Peer Channel protocol and the use of referrals, see [\[MC-PRCH\]](#) sections [2.2.2.3](#) and [3.1](#).

```

Message:
<wsdl:message name="ServiceSettingsResponseInfo">
  <wsdl:part name="ServiceSettings"
xmlns:peer="http://schemas.microsoft.com/net/2006/05/peer" element="peer:ServiceSettings" />

```

```
</wsdl:message>
```

Operation:

```
<wsdl:operation name="GetServiceInfo">  
  <wsdl:output  
wsam:Action="http://schemas.microsoft.com/net/2006/05/peer/resolver/GetServiceSettingsResponse"  
  name="ServiceSettingsResponseInfo" message="tns:ServiceSettingsResponseInfo" />  
</wsdl:operation>
```

Data Types:

```
<xs:complexType name="ServiceSettingsResponseInfo">  
  <xs:sequence>  
    <xs:element minOccurs="0" name="ControlMeshShape" type="xs:boolean" />  
  </xs:sequence>  
</xs:complexType>  
<xs:element name="ServiceSettingsResponseInfo" nillable="true"  
type="tns:ServiceSettingsResponseInfo" />  
<xs:element name="ServiceSettings" nillable="true" type="tns:ServiceSettingsResponseInfo" />
```

ControlMeshShape: The "ControlMeshShape" value of the "xs:element name" attribute is a Boolean value that indicates how the client should deal with referrals. For more information about the use of referrals in the Peer Channel protocol, see [MC-PRCH] sections [2.2.2.3](#) and [3.1](#).

3 Protocol Details

All interactions between the resolver client and resolver service MUST be initiated by the client, and all messages sent by the resolver client (except for [Unregister](#)) MUST receive a corresponding response message from the resolver service.

3.1 Resolver Client Details

The following diagram depicts the typical message sequence used by a client when communicating with a resolver service.

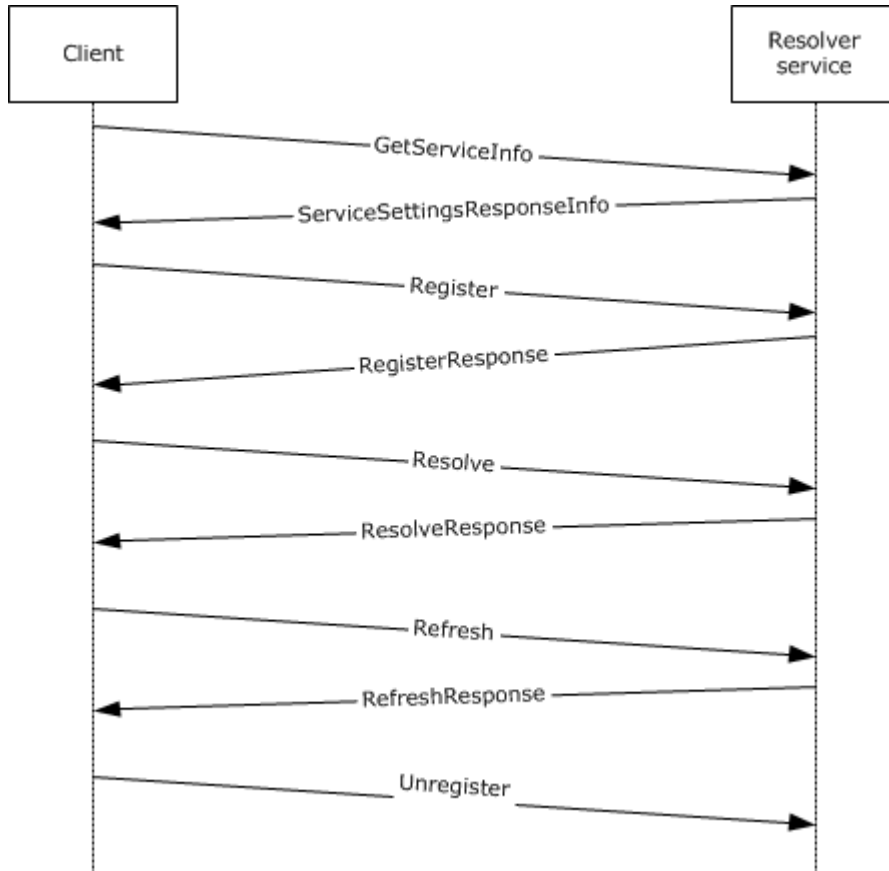


Figure 1: Resolver message sequence

3.1.1 Abstract Data Model

The resolver client MUST store the following information:

- **Resolver service configuration details:** Implementation-specific. Used to establish a connection with the resolver service. This MUST include the location of the service, the protocol used to establish connection, and any security configuration, if applicable.
- **Message Response Timer:** A timer that measures the length of time that an operation requiring a response will wait to receive an answer.

- **Mesh names:** All messages to and from the resolver service perform operations within the context of a mesh name.

The resolver client MUST also store the following for each registration that it makes with the resolver service:

- **RegistrationId:** A GUID ([\[MS-DTYP\]](#) section 2.3.4) that identifies the specific registration record that is stored at the resolver service and is used to refer to that record for the [Update](#), [Unregister](#), and [Refresh](#) operations. The **RegistrationId** element is contained in the [RegisterResponse](#) message returned by the resolver service as a result of a successful **Register** operation and is generated by the resolver service.
- **RegistrationLifetime:** Associated with a particular registration record as indicated by its **RegistrationId**. Indicates the amount of time that the registration record will remain at the resolver service before it is eligible to be deleted. The **RegistrationLifetime** element is contained in the [RegisterResponse](#) message returned by the resolver service as a result of a successful **Register** or **Update** operation. For more see **registration lifetime** in the glossary section [1.1](#).

3.1.2 Timers

3.1.2.1 Client Refresh Timer

The client refresh timer is only used when the resolver client has registered endpoint information with the resolver service and does not require that information to be deleted.

This timer is used to determine when to call [Refresh](#). The client MUST ensure that the **Refresh** operation is called before the time indicated by the **RegistrationLifetime** element has elapsed. This value is received as part of the [RegisterResponse](#) message in response to the initial [Register](#) request or any subsequent [Update](#) request.

Note that the exact interval used for the timer MAY vary to take into account the network latency between the resolver client and server. [<1>](#)

3.1.2.2 Message Response Timer

This timer measures the length of time that an operation requiring a response will wait to receive an answer. This timer MUST have duration of 2 minutes.

3.1.3 Initialization

The higher-layer application or protocol configuration specifies the following:

- Resolver service location.
- Security protocol to use in order to secure the connection (if applicable).

3.1.4 Higher-Layer Triggered Events

All higher-layer triggered events follow the following processing procedure:

1. The resolver client MUST be initialized before processing the event.
2. The resolver client MUST establish a connection with the resolver service using the parameters for location, protocol, and security settings set by initialization before any higher-layer events can be processed.

3. The resolver client sends the message relevant to the event.
4. The resolver client starts a message response timer.

3.1.4.1 Register

The Register message stores endpoint information at the resolver service. The resolver client MUST follow the procedure outlined in section [3.1.4](#) and MUST send a [Register](#) message to the resolver service.

3.1.4.2 Update

The Update message modifies an existing registration record stored at the resolver service. The resolver client MUST follow the procedure outlined in section [3.1.4](#) and MUST send an [Update](#) message to the resolver service.

3.1.4.3 Resolve

The Resolve operation retrieves registration information corresponding to a specific mesh name. The resolver client MUST follow the procedure outlined in section [3.1.4](#) and MUST send a [Resolve](#) message to the resolver service.

3.1.4.4 Unregister

The [Unregister](#) message removes a specific registration record from the resolver service. The resolver client MUST follow the procedure outlined in section [3.1.4](#), with the exception that it MUST NOT start a message response timer. It MUST send an Unregister message to the resolver service and SHOULD close the connection to the resolver service after successfully sending the Unregister message.

3.1.4.5 Refresh

The Refresh message extends the registration lifetime of a specific registration. The resolver client MUST follow the procedure outlined in section [3.1.4](#) and MUST send a [Refresh](#) message to the resolver service.

3.1.4.6 GetServiceInfo

The GetServiceInfo operation is used to query the referral policy of a Peer Channel protocol mesh. The resolver client MUST follow the procedure outlined in section [3.1.4](#) and MUST send a [GetServiceInfo](#) message to the resolver service.

3.1.5 Message Processing Events and Sequencing Rules

After an appropriate response message is received (for instance, [RegisterResponse](#) for a [Register](#) request, and so on), the resolver client:

- MUST clear the message response timer.
- SHOULD close the connection with the resolver service.

3.1.5.1 RegisterResponse Message

If the resolver client is not waiting for a response to a [Register](#) or [Update](#) message, it MUST ignore the [RegisterResponse](#) message.

Upon receiving the RegisterResponse message, the resolver client MUST store the **RegistrationId** value locally. If this message is received in response to an Update message, the **RegistrationId** value MUST replace the locally stored value. Additionally, the resolver client SHOULD start a client refresh timer with the time interval indicated in the **RegistrationLifetime** value in the RegisterResponse message.

3.1.5.2 ResolveResponse Message

If the resolver client is not waiting for a response to a [Resolve](#) message, it MUST ignore this message.

Upon receiving this message, the client MUST deliver the list of **PeerNodeAddress** elements to the higher-layer protocol or application.

3.1.5.3 RefreshResponse Message

If the resolver client is not waiting for a response to a [Refresh](#) message, it MUST ignore this message.

The client MUST take the following action depending on the value of the [RefreshResult](#) enumeration in the **Result** element in the [RefreshResponse](#) message:

- If the RefreshResult value is "Success", the resolver client MUST reset the client refresh timer with the value given by **RegistrationLifetime** in the RefreshResponse message.
- If the RefreshResult value is "RegistrationNotFound", the resolver client MUST ignore the value of the **RegistrationLifetime** field and initiate the **Register** event.

3.1.5.4 ServiceSettingsResponseInfo Message

If the custom resolver client is not waiting for a [ServiceSettingsResponseInfo](#) message, it MUST ignore this message.

Otherwise, it MUST pass the value of the **ControlMeshShape** field to the higher-level protocol or application.

3.1.6 Timer Events

3.1.6.1 Client Refresh Timer

When the client refresh timer fires, the resolver client MUST initiate a **Refresh** operation.

3.1.6.2 Message Response Timer

If the message response timer fires, it indicates that the operation that started the timer has failed. The client MUST close the connection with the service and signal failure to the higher-layer protocol or application.

3.1.7 Other Local Events

3.1.7.1 Shutting Down the Resolver Service

When the resolver client attempts to shut down, it SHOULD send an [Unregister](#) request to the resolver service.

3.2 Resolver Service Details

3.2.1 Abstract Data Model

The resolver service MUST store the following information:

- **Records data store:** Contains all the registration records that are registered with the service. Each record MUST contain the following fields, as defined in the glossary of this document: **ClientId**, mesh name, **RegistrationId**, **PeerNodeAddress**, and **expiration time**. The format of the last field is protocol-independent.
- **MaintenanceInterval:** Defines the periodicity of the maintenance timer. This SHOULD be one minute.
- **DefaultRegistrationLifetime:** Defines the amount of time for which registration records will remain valid before requiring to be refreshed. This SHOULD be set to 10 minutes.
- **ReferralPolicy:** A Boolean value indicating whether referrals are to be used by Peer Channel protocol clients that are using this resolver service as a discovery mechanism.

3.2.2 Timers

3.2.2.1 Maintenance Timer

The maintenance timer is used to periodically remove stale registration records from the **records data store** of the resolver service.

3.2.3 Initialization

The resolver service MUST start a listener that will accept connections at the specific location and with the specific protocol and security configuration with which resolver clients have been configured.

3.2.4 Higher-Layer Triggered Events

There are no higher-layer triggered events for the resolver service. All operations are confined to the processing of messages (section [3.2.5](#)) or the maintenance timer (section [3.2.2.1](#)).

3.2.5 Message Processing Events and Sequencing Rules

The resolver service MUST send all response messages to the originator of the corresponding request message.

If any request message is incomplete or incorrectly formatted, the resolver service MUST abort the connection with the resolver client immediately.

3.2.5.1 Register

The service MUST create a new registration record using the [PeerNodeAddress](#) structure that is contained in the [Register](#) message and MUST assign the new record a unique **RegistrationId** element. The service MUST then send a [RegisterResponse](#) message to the client with the newly created **RegistrationId** and a **RegistrationLifetime** element with the value of "DefaultRegistrationLifetime". If any error occurs during the processing of the Register operation, the connection with the resolver client MUST be aborted immediately.

3.2.5.2 Update

The service MUST attempt to locate the registration record indicated by the **MeshId** and **RegistrationId** fields in the [Update](#) message. If the record cannot be found, the resolver service SHOULD create a new record and send a [RegisterResponse](#) message, as outlined in section [3.2.5.1](#). The **RegistrationId** of the new record MAY [<2>](#) be different from the value given in the Update message. If the registration record can be found, the resolver service MUST replace the PeerNodeAddress in that record with the PeerNodeAddress provided in the Update message. The service then MUST send a RegisterResponse message back to the resolver client with the **RegistrationId** of the registration record that was updated and **RegistrationLifetime** set to "DefaultRegistrationLifetime". If any error occurs during the processing of the Update operation, the connection with the resolver client MUST be aborted immediately.

3.2.5.3 Resolve

The resolver service MUST attempt to locate registration records associated with the value of the **MeshId** element in the [Resolve](#) message. The resolver service MAY [<3>](#) use the **RegistrationId** or **ClientId** to determine which specific registration records to return, but MUST NOT select more records than are indicated by the value of the **MaxAddresses** field. Once these records have been chosen by the implementation-specific mechanism, the resolver service MUST create a [ResolveResponse](#) message with the [PeerNodeAddress](#) structures of these records and send it to the requesting resolver client. If any error occurs during the processing of the Resolve operation, the connection with the resolver client MUST be aborted immediately.

3.2.5.4 Unregister

The resolver service SHOULD attempt to locate a registration record, as given by the value of the **RegistrationId** element in the [Unregister](#) message. If the record is found, it MUST be removed or otherwise marked as expired. If any error occurs during the processing of the Unregister operation, the connection with the resolver client MUST be aborted immediately.

3.2.5.5 Refresh

The resolver service MUST attempt to locate the registration record indicated by the value of the **RegistrationId** element in the [Refresh](#) request. If the record is found, the resolver service MUST extend the registration record's expiration time to the current time plus the "DefaultRegistrationLifetime". The resolver service then MUST send a [RefreshResponse](#) message to the resolver client with the value of "Success" in the **Result** element and "DefaultRegistrationLifetime" in the **RegistrationLifetime** element. If the attempt to locate the record is unsuccessful, the resolver service MUST send a RefreshResponse message to the requesting resolver client with the value of "RegistrationNotFound" in the **Result** element and leave the **RegistrationLifetime** field blank. If any other error occurs during the processing of the Refresh operation, the connection with the resolver client MUST be aborted immediately.

3.2.5.6 GetServiceInfo

The resolver service MUST return to the requesting resolver client a [ServiceSettingsResponseInfo](#) message with the local value of "ReferralPolicy" entered for the **ControlMeshShape** element. If any error occurs during the processing of the GetServiceInfo operation, the connection with the resolver client MUST be aborted immediately.

3.2.6 Timer Events

3.2.6.1 Maintenance Timer

When the maintenance timer fires, the resolver service **MUST** examine the registration records in its **records data store**. All records whose expiration time precedes the current system time **MUST** be removed or marked as invalid.

3.2.7 Other Local Events

There are no other local events for the resolver service.

4 Protocol Examples

4.1 Peer Discovery

The primary use of the Peer Channel Custom Resolver Protocol is to allow client applications to discover and connect to other clients. The following example illustrates how the use of this protocol allows two nodes to find and connect to each other.

Terms Used in This Example:

Node "A", Node "B": Two separate applications/nodes running a custom resolver client that implements this protocol.

PNA_A, PNA_B: PeerNodeAddresses corresponding to node "A", node "B", and the resolver service, respectively.

"ExampleMesh": The mesh name used in this protocol example.

"S": A machine running a custom resolver service that implements this protocol.

Discovery Process:

A: Node A Registers with Resolver Service

1. "A" establishes a connection with "S".
2. "A" creates a [Register](#) request (contents: PNA_A, "ExampleMesh") and sends this message to "S".
3. "S" receives the Register request and adds PNA_A to its **records data store** under the name "ExampleMesh" with a **RegistrationId** of 100.
4. "S" sends a [RegisterResponse](#) message to "A" with the **RegistrationId** of the newly created registration record (100).
5. "A" receives the RegisterResponse message and stores the **RegistrationId** locally for future use.

B: Node A Resolves for Other Nodes

1. "A" sends a [Resolve](#) request to "S" (contents: "ExampleMesh", 5 for **MaxAddresses**).
2. "S" receives the Resolve request and searches its **records data store** for registration records under the mesh name "ExampleMesh". It finds one record (with **RegistrationId** of 100) that contains PNA_A.
3. "S" sends a [ResolveResponse](#) message to "A" containing one PeerNodeAddress (PNA_A).
4. "A" receives the ResolveResponse message and extracts the single PeerNodeAddress PNA_A. Since this record corresponds to its own address, "A" does nothing else at this time. Node "A" may choose to send an additional Resolve request after some time has passed to check for newly registered nodes.

C: Node B Resolves for Other Nodes

1. "B" sends a Resolve request to "S" (contents: "ExampleMesh", 5 for **MaxAddress**)
2. "S" receives "B"'s Resolver request, searches the **records data store** for registration records under mesh name "ExampleMesh", and finds one record (number 100), which contains PNA_A.

3. "S" sends a ResolveResponse message to "B" containing PNA_A.
4. "B" receives the ResolveResponse message and extracts PNA_A from message body.
5. "B" uses PNA_A to set up a direct connection between "A" and "B".

D: Node B Registers with the Resolver Service

This process is the same as that in section A, except that node "B" is substituted for node "A" and PNA_B for PNA_A.

Note that the order of Register and Resolve is arbitrary; it makes no difference whether a node registers before or after resolving, provided that the node ensures that it does not try to connect to itself. It may be advisable to Resolve first to avoid having nodes receive their own records from Resolve requests. However, performing Register first ensures that the node is discoverable by other nodes as soon as possible.

In the preceding example, if node "B" had registered before resolving, it would have received both PNA_A and PNA_B in the ResolveResponse message.

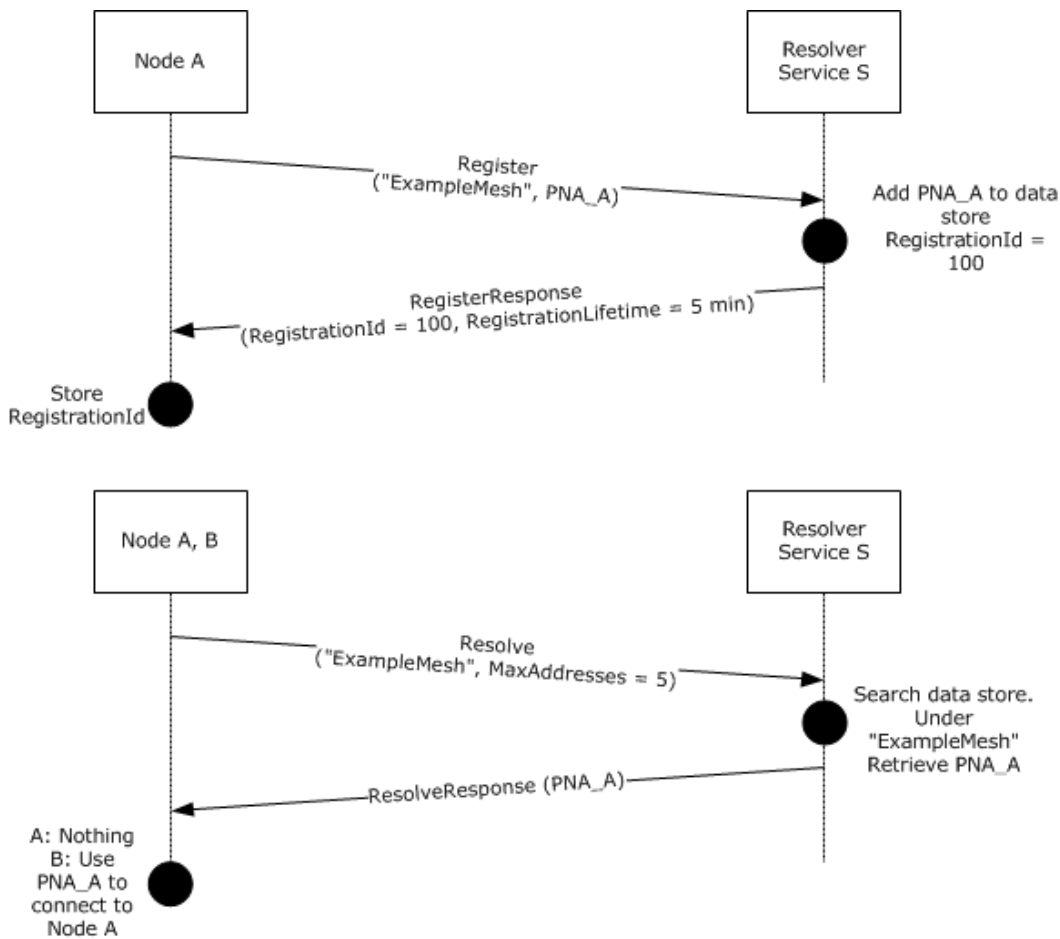


Figure 2: Register and resolve sequences

5 Security

5.1 Security Considerations for Implementers

Although the Peer Channel Custom Resolver Protocol does not include any specific security information, it is advised that the connection between the custom resolver client and the custom resolver service be secured. This is important if the mesh name and IP addresses of clients need to remain private. Additionally, a malicious attacker could use information sent over the wire to corrupt the **records data store** of the resolver service (for example, by prematurely unregistering registration records from the service by sniffing RegistrationIds off the wire).

5.2 Index of Security Parameters

None.

6 Appendix A: Full WSDL

For ease of implementation, the full WSDL and schema are provided in this appendix.

```
<?xml version="1.0" encoding="utf-8"?>
<wsdl:definitions xmlns:soap="http://schemas.xmlsoap.org/wsdl/soap/"
xmlns:soapenc="http://schemas.xmlsoap.org/soap/encoding/" xmlns:wsu="http://docs.oasis-
open.org/wss/2004/01/oasis-200401-wss-wssecurity-utility-1.0.xsd"
xmlns:xsd="http://www.w3.org/2001/XMLSchema"
xmlns:soap12="http://schemas.xmlsoap.org/wsdl/soap12/"
xmlns:tns="http://schemas.microsoft.com/net/2006/05/peer/resolver"
xmlns:wsa="http://schemas.xmlsoap.org/ws/2004/08/addressing"
xmlns:wsp="http://www.w3.org/ns/ws-policy"
xmlns:wsap="http://schemas.xmlsoap.org/ws/2004/08/addressing/policy"
xmlns:wsaw="http://www.w3.org/2006/05/addressing/wsdl"
xmlns:msc="http://schemas.microsoft.com/ws/2005/12/wsdl/contract"
xmlns:wsa10="http://www.w3.org/2005/08/addressing"
xmlns:wsx="http://schemas.xmlsoap.org/ws/2004/09/mex"
xmlns:wsam="http://www.w3.org/2007/05/addressing/metadata"
targetNamespace="http://schemas.microsoft.com/net/2006/05/peer/resolver"
xmlns:wsdl="http://schemas.xmlsoap.org/wsdl/">
  <wsdl:types>
    <xsd:schema
targetNamespace="http://schemas.microsoft.com/net/2006/05/peer/resolver/Imports">
      <xsd:import namespace="http://schemas.microsoft.com/net/2006/05/peer" />
      <xsd:import namespace="http://schemas.microsoft.com/2003/10/Serialization/" />
      <xsd:import namespace="http://www.w3.org/2005/08/addressing" />
      <xsd:import namespace="http://schemas.datacontract.org/2004/07/System.Net" />
      <xsd:import namespace="http://schemas.datacontract.org/2004/07/System.Net.Sockets" />
      <xsd:import namespace="http://schemas.microsoft.com/2003/10/Serialization/Arrays" />
      <xsd:import
namespace="http://schemas.datacontract.org/2004/07/System.ServiceModel.PeerResolvers" />
    </xsd:schema>
  </wsdl:types>
  <wsdl:message name="RegisterInfo">
    <wsdl:part name="Register" xmlns:peer="http://schemas.microsoft.com/net/2006/05/peer"
element="peer:Register" />
  </wsdl:message>
  <wsdl:message name="RegisterResponseInfo">
    <wsdl:part name="RegisterResponse"
xmlns:peer="http://schemas.microsoft.com/net/2006/05/peer" element="peer:RegisterResponse" />
  </wsdl:message>
  <wsdl:message name="UpdateInfo">
    <wsdl:part name="UpdateInfo" xmlns:peer="http://schemas.microsoft.com/net/2006/05/peer"
element="peer:UpdateInfo" />
  </wsdl:message>
  <wsdl:message name="ResolveInfo">
    <wsdl:part name="Resolve" xmlns:peer="http://schemas.microsoft.com/net/2006/05/peer"
element="peer:Resolve" />
  </wsdl:message>
  <wsdl:message name="ResolveResponseInfo">
    <wsdl:part name="ResolveResponse"
xmlns:peer="http://schemas.microsoft.com/net/2006/05/peer" element="peer:ResolveResponse" />
  </wsdl:message>
  <wsdl:message name="UnregisterInfo">
    <wsdl:part name="Unregister" xmlns:peer="http://schemas.microsoft.com/net/2006/05/peer"
element="peer:Unregister" />
  </wsdl:message>
  <wsdl:message name="IPeerResolverContract_Unregister_OutputMessage" />
```

```

    <wsdl:message name="RefreshInfo">
      <wsdl:part name="Refresh" xmlns:peer="http://schemas.microsoft.com/net/2006/05/peer"
        element="peer:Refresh" />
    </wsdl:message>
    <wsdl:message name="RefreshResponseInfo">
      <wsdl:part name="RefreshResponse"
        xmlns:peer="http://schemas.microsoft.com/net/2006/05/peer" element="peer:RefreshResponse" />
    </wsdl:message>
    <wsdl:message name="IPeerResolverContract_GetServiceInfo_InputMessage" />
    <wsdl:message name="ServiceSettingsResponseInfo">
      <wsdl:part name="ServiceSettings"
        xmlns:peer="http://schemas.microsoft.com/net/2006/05/peer" element="peer:ServiceSettings" />
    </wsdl:message>
    <wsdl:portType name="IPeerResolverContract">
      <wsdl:operation name="Register">
        <wsdl:input
          wsam:Action="http://schemas.microsoft.com/net/2006/05/peer/resolver/Register"
          name="RegisterInfo" message="tns:RegisterInfo" />
        <wsdl:output
          wsam:Action="http://schemas.microsoft.com/net/2006/05/peer/resolver/RegisterResponse"
          name="RegisterResponseInfo" message="tns:RegisterResponseInfo" />
        </wsdl:operation>
      <wsdl:operation name="Update">
        <wsdl:input wsam:Action="http://schemas.microsoft.com/net/2006/05/peer/resolver/Update"
          name="UpdateInfo" message="tns:UpdateInfo" />
        <wsdl:output
          wsam:Action="http://schemas.microsoft.com/net/2006/05/peer/resolver/UpdateResponse"
          name="RegisterResponseInfo" message="tns:RegisterResponseInfo" />
        </wsdl:operation>
      <wsdl:operation name="Resolve">
        <wsdl:input
          wsam:Action="http://schemas.microsoft.com/net/2006/05/peer/resolver/Resolve"
          name="ResolveInfo" message="tns:ResolveInfo" />
        <wsdl:output
          wsam:Action="http://schemas.microsoft.com/net/2006/05/peer/resolver/ResolveResponse"
          name="ResolveResponseInfo" message="tns:ResolveResponseInfo" />
        </wsdl:operation>
      <wsdl:operation name="Unregister">
        <wsdl:input
          wsam:Action="http://schemas.microsoft.com/net/2006/05/peer/resolver/Unregister"
          name="UnregisterInfo" message="tns:UnregisterInfo" />
        <wsdl:output
          wsam:Action="http://schemas.microsoft.com/net/2006/05/peer/resolver/IPeerResolverContract/UnregisterResponse"
          message="tns:IPeerResolverContract_Unregister_OutputMessage" />
        </wsdl:operation>
      <wsdl:operation name="Refresh">
        <wsdl:input
          wsam:Action="http://schemas.microsoft.com/net/2006/05/peer/resolver/Refresh"
          name="RefreshInfo" message="tns:RefreshInfo" />
        <wsdl:output
          wsam:Action="http://schemas.microsoft.com/net/2006/05/peer/resolver/RefreshResponse"
          name="RefreshResponseInfo" message="tns:RefreshResponseInfo" />
        </wsdl:operation>
      <wsdl:operation name="GetServiceInfo">
        <wsdl:input
          wsam:Action="http://schemas.microsoft.com/net/2006/05/peer/resolver/GetServiceSettings"
          message="tns:IPeerResolverContract_GetServiceInfo_InputMessage" />
        <wsdl:output
          wsam:Action="http://schemas.microsoft.com/net/2006/05/peer/resolver/GetServiceSettingsResponse"
          name="ServiceSettingsResponseInfo" message="tns:ServiceSettingsResponseInfo" />
        </wsdl:operation>

```

```

</wsdl:portType>
</wsdl:definitions>

<?xml version="1.0" encoding="utf-8"?>
<xs:schema xmlns:ser="http://schemas.microsoft.com/2003/10/Serialization/"
xmlns:tns="http://schemas.microsoft.com/net/2006/05/peer" elementFormDefault="qualified"
targetNamespace="http://schemas.microsoft.com/net/2006/05/peer"
xmlns:xs="http://www.w3.org/2001/XMLSchema">
  <xs:import namespace="http://schemas.microsoft.com/2003/10/Serialization/" />
  <xs:import namespace="http://www.w3.org/2005/08/addressing" />
  <xs:import namespace="http://schemas.datacontract.org/2004/07/System.Net" />
  <xs:import
namespace="http://schemas.datacontract.org/2004/07/System.ServiceModel.PeerResolvers" />
  <xs:complexType name="Register">
    <xs:sequence>
      <xs:element minOccurs="0" name="ClientId" type="ser:guid" />
      <xs:element minOccurs="0" name="MeshId" nillable="true" type="xs:string" />
      <xs:element minOccurs="0" name="NodeAddress" nillable="true" type="tns:PeerNodeAddress"
/>
    </xs:sequence>
  </xs:complexType>
  <xs:element name="Register" nillable="true" type="tns:Register" />
  <xs:complexType name="PeerNodeAddress">
    <xs:sequence>
      <xs:element minOccurs="0" name="EndpointAddress" nillable="true"
xmlns:q1="http://www.w3.org/2005/08/addressing" type="q1:EndpointReferenceType" />
      <xs:element minOccurs="0" name="IPAddresses" nillable="true"
xmlns:q2="http://schemas.datacontract.org/2004/07/System.Net" type="q2:ArrayOfIPAddress" />
    </xs:sequence>
  </xs:complexType>
  <xs:element name="PeerNodeAddress" nillable="true" type="tns:PeerNodeAddress" />
  <xs:complexType name="RegisterResponse">
    <xs:sequence>
      <xs:element minOccurs="0" name="RegistrationId" type="ser:guid" />
      <xs:element minOccurs="0" name="RegistrationLifetime" type="ser:duration" />
    </xs:sequence>
  </xs:complexType>
  <xs:element name="RegisterResponse" nillable="true" type="tns:RegisterResponse" />
  <xs:complexType name="UpdateInfo">
    <xs:sequence>
      <xs:element minOccurs="0" name="ClientId" type="ser:guid" />
      <xs:element minOccurs="0" name="MeshId" nillable="true" type="xs:string" />
      <xs:element minOccurs="0" name="NodeAddress" nillable="true" type="tns:PeerNodeAddress"
/>
    </xs:sequence>
  </xs:complexType>
  <xs:element name="UpdateInfo" nillable="true" type="tns:UpdateInfo" />
  <xs:complexType name="ResolveInfo">
    <xs:sequence>
      <xs:element minOccurs="0" name="ClientId" type="ser:guid" />
      <xs:element minOccurs="0" name="MaxAddresses" type="xs:int" />
      <xs:element minOccurs="0" name="MeshId" nillable="true" type="xs:string" />
    </xs:sequence>
  </xs:complexType>
  <xs:element name="ResolveInfo" nillable="true" type="tns:ResolveInfo" />
  <xs:element name="Resolve" nillable="true" type="tns:ResolveInfo" />
  <xs:complexType name="ResolveResponseInfo">
    <xs:sequence>

```

```

        <xs:element minOccurs="0" name="Addresses" nillable="true"
type="tns:ArrayOfPeerNodeAddress" />
    </xs:sequence>
</xs:complexType>
<xs:element name="ResolveResponseInfo" nillable="true" type="tns:ResolveResponseInfo" />
<xs:complexType name="ArrayOfPeerNodeAddress">
    <xs:sequence>
        <xs:element minOccurs="0" maxOccurs="unbounded" name="PeerNodeAddress" nillable="true"
type="tns:PeerNodeAddress" />
    </xs:sequence>
</xs:complexType>
<xs:element name="ArrayOfPeerNodeAddress" nillable="true" type="tns:ArrayOfPeerNodeAddress"
/>
<xs:element name="ResolveResponse" nillable="true" type="tns:ResolveResponseInfo" />
<xs:complexType name="UnregisterInfo">
    <xs:sequence>
        <xs:element minOccurs="0" name="MeshId" nillable="true" type="xs:string" />
        <xs:element minOccurs="0" name="RegistrationId" type="ser:guid" />
    </xs:sequence>
</xs:complexType>
<xs:element name="UnregisterInfo" nillable="true" type="tns:UnregisterInfo" />
<xs:element name="Unregister" nillable="true" type="tns:UnregisterInfo" />
<xs:complexType name="RefreshInfo">
    <xs:sequence>
        <xs:element minOccurs="0" name="MeshId" nillable="true" type="xs:string" />
        <xs:element minOccurs="0" name="RegistrationId" type="ser:guid" />
    </xs:sequence>
</xs:complexType>
<xs:element name="RefreshInfo" nillable="true" type="tns:RefreshInfo" />
<xs:element name="Refresh" nillable="true" type="tns:RefreshInfo" />
<xs:complexType name="RefreshResponseInfo">
    <xs:sequence>
        <xs:element minOccurs="0" name="RegistrationLifetime" type="ser:duration" />
        <xs:element minOccurs="0" name="Result"
xmlns:q3="http://schemas.datacontract.org/2004/07/System.ServiceModel.PeerResolvers"
type="q3:RefreshResult" />
    </xs:sequence>
</xs:complexType>
<xs:element name="RefreshResponseInfo" nillable="true" type="tns:RefreshResponseInfo" />
<xs:element name="RefreshResponse" nillable="true" type="tns:RefreshResponseInfo" />
<xs:complexType name="ServiceSettingsResponseInfo">
    <xs:sequence>
        <xs:element minOccurs="0" name="ControlMeshShape" type="xs:boolean" />
    </xs:sequence>
</xs:complexType>
<xs:element name="ServiceSettingsResponseInfo" nillable="true"
type="tns:ServiceSettingsResponseInfo" />
<xs:element name="ServiceSettings" nillable="true" type="tns:ServiceSettingsResponseInfo"
/>
</xs:schema
xmlns:tns="http://schemas.datacontract.org/2004/07/System.ServiceModel.PeerResolvers"
elementFormDefault="qualified"
targetNamespace="http://schemas.datacontract.org/2004/07/System.ServiceModel.PeerResolvers"
xmlns:xs="http://www.w3.org/2001/XMLSchema">
    <xs:simpleType name="RefreshResult">
        <xs:restriction base="xs:string">
            <xs:enumeration value="Success" />
            <xs:enumeration value="RegistrationNotFound" />
        </xs:restriction>
    </xs:simpleType>

```

```
<xs:element name="RefreshResult" nillable="true" type="tns:RefreshResult" />
</xs:schema>
```

7 Appendix B: Product Behavior

This document specifies version-specific details in the Microsoft .NET Framework. For information about which versions of .NET Framework are available in each released Windows product or as supplemental software, see [.NET Framework](#).

The information in this specification is applicable to the following Microsoft products or supplemental software. References to product versions include released service packs:

- Microsoft .NET Framework 3.0
- Microsoft .NET Framework 3.5
- Microsoft .NET Framework 4.0
- Microsoft .NET Framework 4.5

Exceptions, if any, are noted below. If a service pack or Quick Fix Engineering (QFE) number appears with the product version, behavior changed in that service pack or QFE. The new behavior also applies to subsequent service packs of the product unless otherwise specified. If a product edition appears with the product version, behavior is different in that product edition.

Unless otherwise specified, any statement of optional behavior in this specification that is prescribed using the terms SHOULD or SHOULD NOT implies product behavior in accordance with the SHOULD or SHOULD NOT prescription. Unless otherwise specified, the term MAY implies that the product does not follow the prescription.

[<1> Section 3.1.2.1](#): The Windows implementation does not take into account client-server latency when setting the refresh timer.

[<2> Section 3.2.5.2](#): If an [Update](#) message is received by the Windows implementation of the custom resolver service and the **RegistrationId** cannot be found in the service's data store, a new registration record is created with a unique **RegistrationId**.

[<3> Section 3.2.5.3](#): The Windows implementation of the Peer Channel Custom Resolver service is intended to distribute connections evenly among participating resolver clients. As a result, if the number of registration records under a particular mesh name exceeds the value of the **MaxAddresses** element as contained in the [Resolve](#) message, the resolver service chooses a random subset of those registration records to return to the resolver client. The **RegistrationId** and **ClientId** elements in the [Resolve](#) message are not used by the Windows implementation of the resolver service.

8 Change Tracking

No table of changes is available. The document is either new or has had no changes since its last release.

9 Index

A

Abstract data model
[resolver client](#) 23
[resolver service](#) 27
[Applicability](#) 10

C

[Capability negotiation](#) 10
[Change tracking](#) 39
[ClientId string](#) 8

D

Data model - abstract
[resolver client](#) 23
[resolver service](#) 27

E

[Examples - Peer Discovery](#) 30

F

[Fields - vendor-extensible](#) 10
[Full WSDL](#) 33

G

[GetServiceInfo message](#) 18
[Glossary](#) 6

H

Higher-layer triggered events
resolver client
[GetServiceInfo operation](#) 25
[overview](#) 24
[Refresh message](#) 25
[Register message](#) 25
[Resolve operation](#) 25
[Unregister message](#) 25
[Update message](#) 25
[resolver service](#) 27

I

[Implementer - security considerations](#) 32
[Index of security parameters](#) 32
[Informative references](#) 8
Initialization
[resolver client](#) 24
[resolver service](#) 27
[Introduction](#) 6

L

Local events

[resolver client - shutting down the resolver service](#) 26
[resolver service](#) 29

M

[Mesh name string](#) 8
Message processing
resolver client
[overview](#) 25
[RefreshResponse message](#) 26
[RegisterResponse message](#) 25
[ResolveResponse message](#) 26
[ServiceSettingsInfoResponse message](#) 26
resolver service
[GetServiceInfo](#) 28
[overview](#) 27
[Refresh request](#) 28
[Register message](#) 27
[Resolve message](#) 28
[Unregister message](#) 28
[Update message](#) 28

Messages

[GetServiceInfo message](#) 18
[PeerNodeAddress structure](#) 12
[Refresh message](#) 16
[RefreshResponse message](#) 20
[RefreshResult enumeration](#) 13
[Register message](#) 14
[RegisterResponse message](#) 18
[Resolve message](#) 15
[ResolveResponse message](#) 19
[ServiceSettings message](#) 21
[transport](#) 11
[Unregister message](#) 17
[Update message](#) 16

N

[Normative references](#) 7

O

[Overview \(synopsis\)](#) 8

P

[Parameters - security index](#) 32
[Peer Discovery example](#) 30
[PeerNodeAddress structure](#) 12
[Preconditions](#) 10
[Prerequisites](#) 10
[Product behavior](#) 38

R

References
[informative](#) 8
[normative](#) 7

- [Refresh message](#) 16
- [RefreshResponse message](#) 20
- [RefreshResult enumeration](#) 13
- [Register message](#) 14
- [RegisterResponse message](#) 18
- [Registration record maintenance](#) 9
- [RegistrationId](#) 9
- [Relationship to other protocols](#) 9
- [Resolve message](#) 15
- Resolver client
 - [abstract data model](#) 23
 - higher-layer triggered events
 - [GetServiceInfo operation](#) 25
 - [overview](#) 24
 - [Refresh message](#) 25
 - [Register message](#) 25
 - [Resolve operation](#) 25
 - [Unregister message](#) 25
 - [Update message](#) 25
 - [initialization](#) 24
 - [local events - shutting down the resolver service](#) 26
 - message processing
 - [overview](#) 25
 - [RefreshResponse message](#) 26
 - [RegisterResponse message](#) 25
 - [ResolveResponse message](#) 26
 - [ServiceSettingsInfoResponse message](#) 26
 - sequencing rules
 - [overview](#) 25
 - [RefreshResponse message](#) 26
 - [RegisterResponse message](#) 25
 - [ResolveResponse message](#) 26
 - [ServiceSettingsInfoResponse message](#) 26
 - timer events
 - [client refresh timer](#) 26
 - [message response timer](#) 26
 - timers
 - [client refresh timer](#) 24
 - [message response timer](#) 24
- Resolver service
 - [abstract data model](#) 27
 - [connecting](#) 9
 - [higher-layer triggered events](#) 27
 - [initialization](#) 27
 - [local events](#) 29
 - message processing
 - [GetServiceInfo](#) 28
 - [overview](#) 27
 - [Refresh request](#) 28
 - [Register message](#) 27
 - [Resolve message](#) 28
 - [Unregister message](#) 28
 - [Update message](#) 28
 - [operations list](#) 9
 - sequencing rules
 - [GetServiceInfo](#) 28
 - [overview](#) 27
 - [Refresh request](#) 28
 - [Register message](#) 27
 - [Resolve message](#) 28

- [Unregister message](#) 28
- [Update message](#) 28
- [timer events - maintenance timer](#) 29
- [timers - maintenance timer](#) 27
- [ResolveResponse message](#) 19

S

- Security
 - [implementer considerations](#) 32
 - [parameter index](#) 32
- Sequencing rules
 - resolver client
 - [overview](#) 25
 - [RefreshResponse message](#) 26
 - [RegisterResponse message](#) 25
 - [ResolveResponse message](#) 26
 - [ServiceSettingsInfoResponse message](#) 26
 - resolver service
 - [GetServiceInfo](#) 28
 - [overview](#) 27
 - [Refresh request](#) 28
 - [Register message](#) 27
 - [Resolve message](#) 28
 - [Unregister message](#) 28
 - [Update message](#) 28
- [ServiceSettings message](#) 21
- [Standards assignments](#) 10

T

- Timer events
 - resolver client
 - [client refresh timer](#) 26
 - [message response timer](#) 26
 - [resolver service - maintenance timer](#) 29
- Timers
 - resolver client
 - [client refresh timer](#) 24
 - [message response timer](#) 24
 - [resolver service - maintenance timer](#) 27
- [Tracking changes](#) 39
- [Transport](#) 11
- Triggered events - higher-layer
 - resolver client
 - [GetServiceInfo operation](#) 25
 - [overview](#) 24
 - [Refresh message](#) 25
 - [Register message](#) 25
 - [Resolve operation](#) 25
 - [Unregister message](#) 25
 - [Update message](#) 25
 - [resolver service](#) 27

U

- [Unregister message](#) 17
- [Update message](#) 16

V

- [Vendor-extensible fields](#) 10

[Versioning](#) 10

W

[WSDL](#) 33